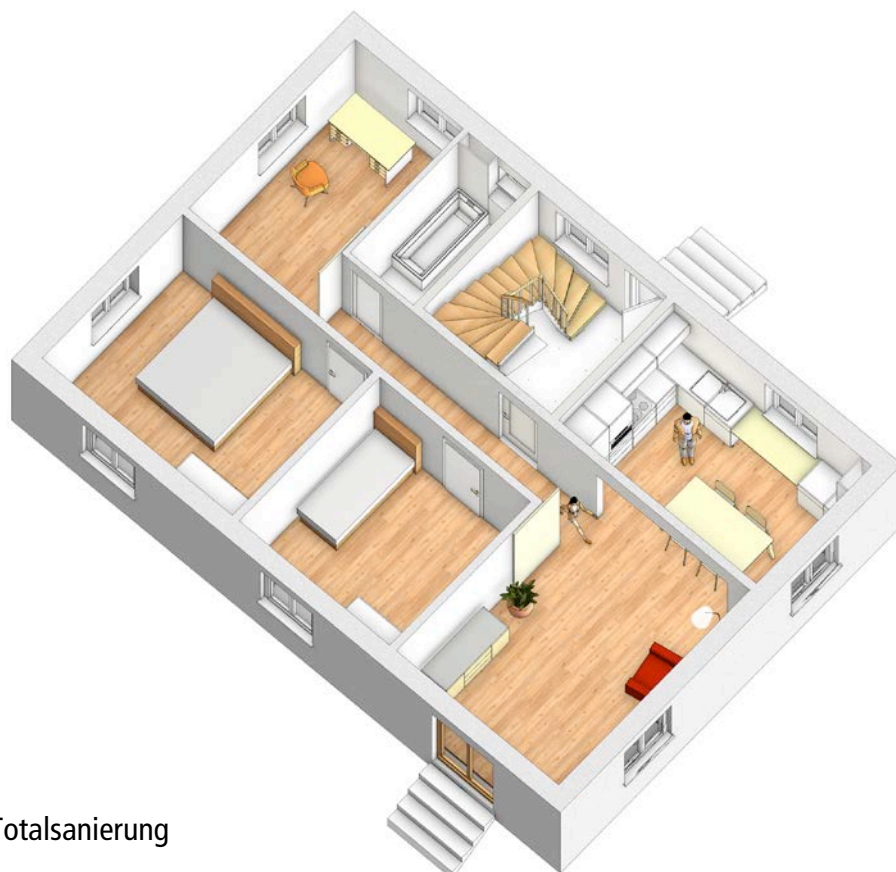


# EBG Rapperswil | Gesamterneuerung Baulos 3



1920: Neubau Baulos 3



2019: Projekt Totalsanierung



Situationsplan | Untergeschoss



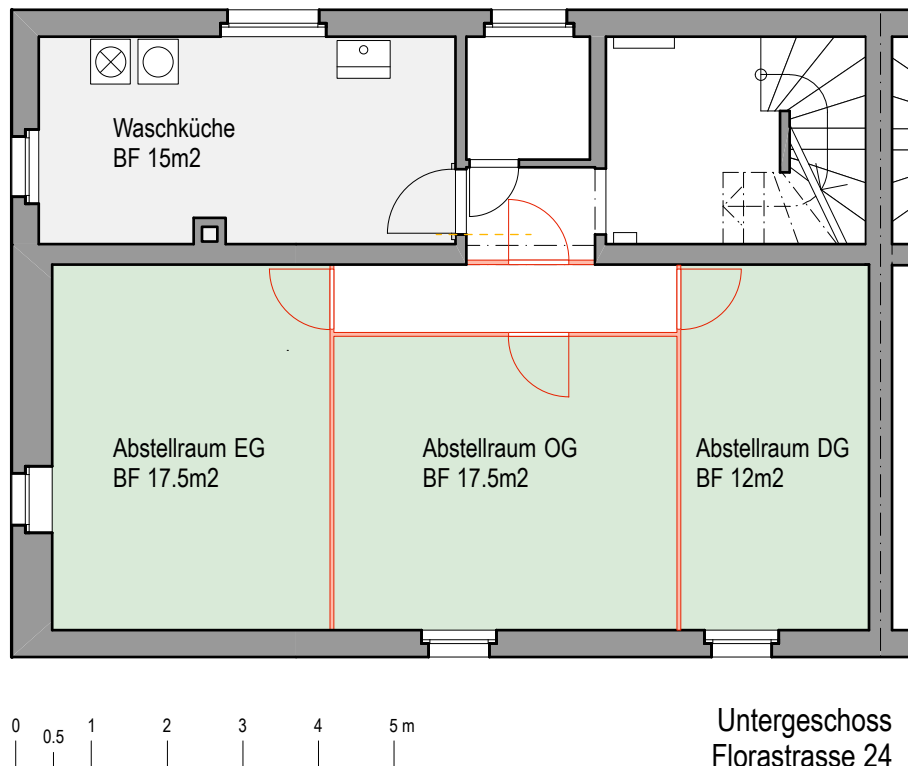
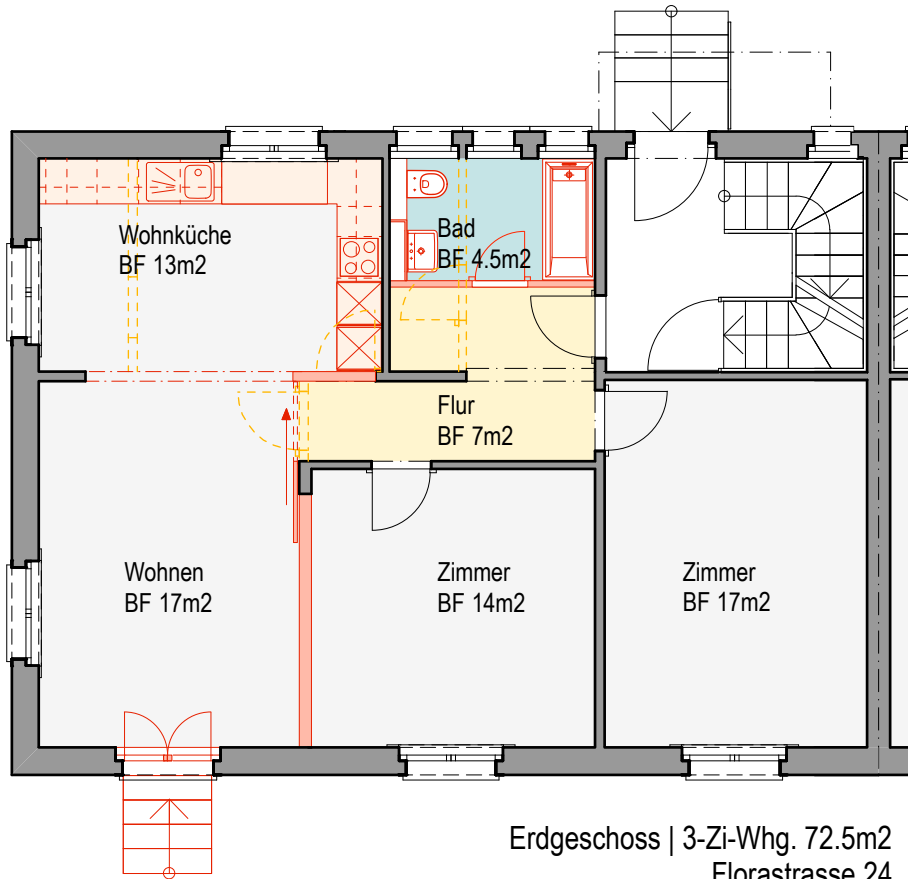
Situationsplan | Erdgeschoss

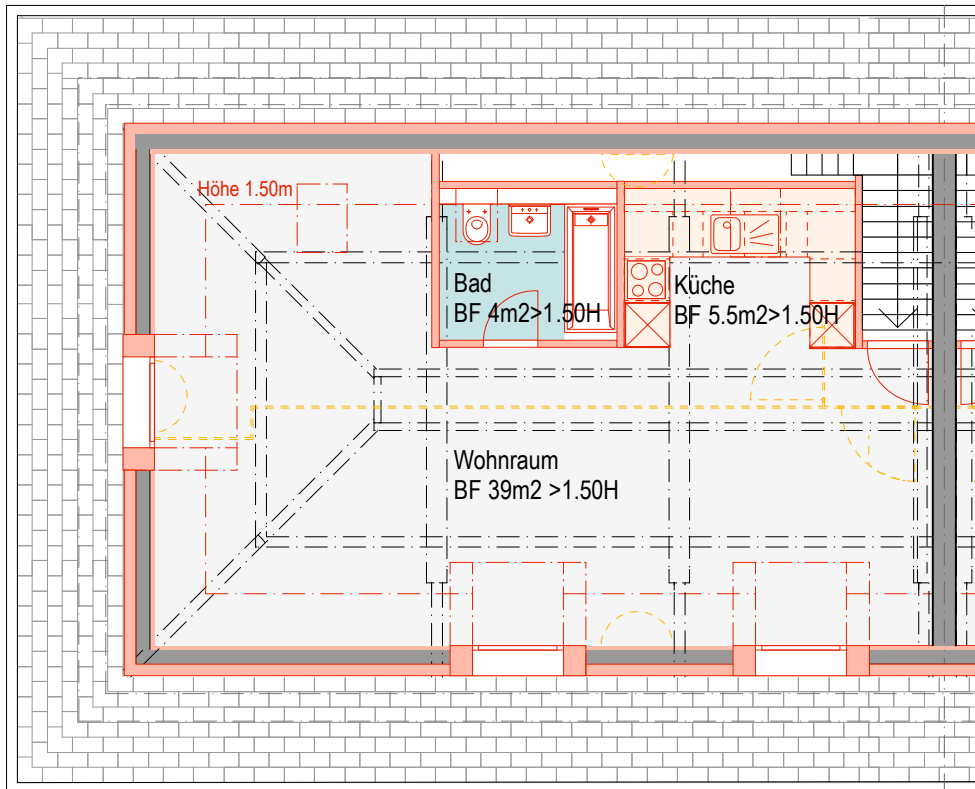


Situationsplan | Obergeschoss

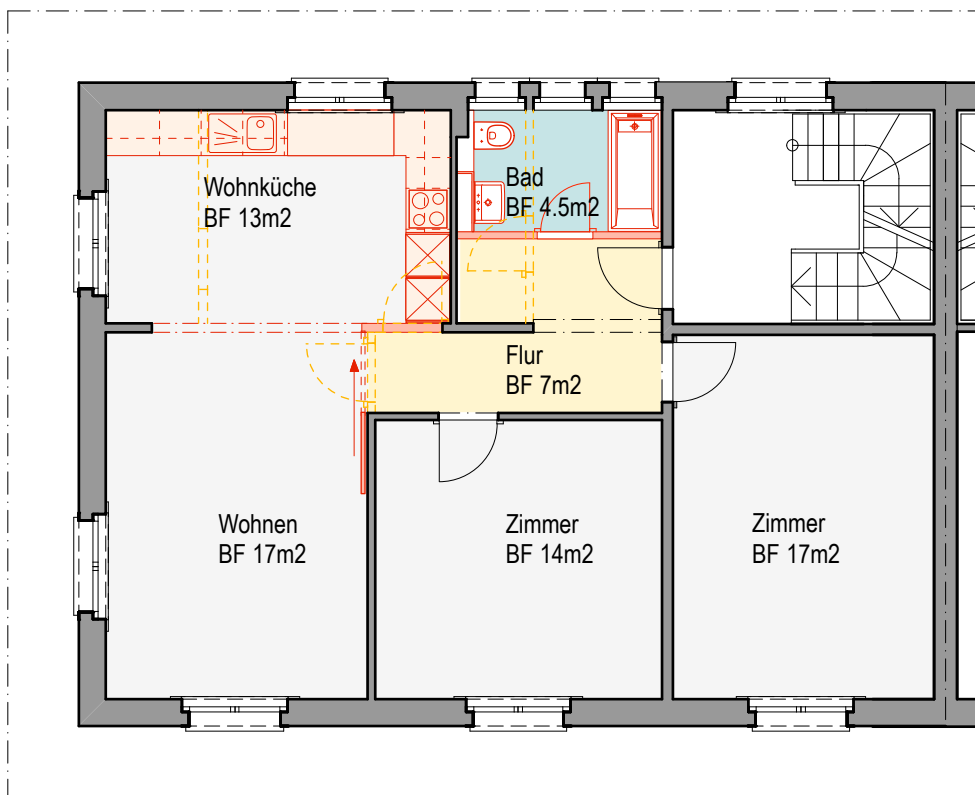


Situationsplan | Dachgeschoss





Dachgeschoss | Studio 48.5m<sup>2</sup>  
Florastrasse 24

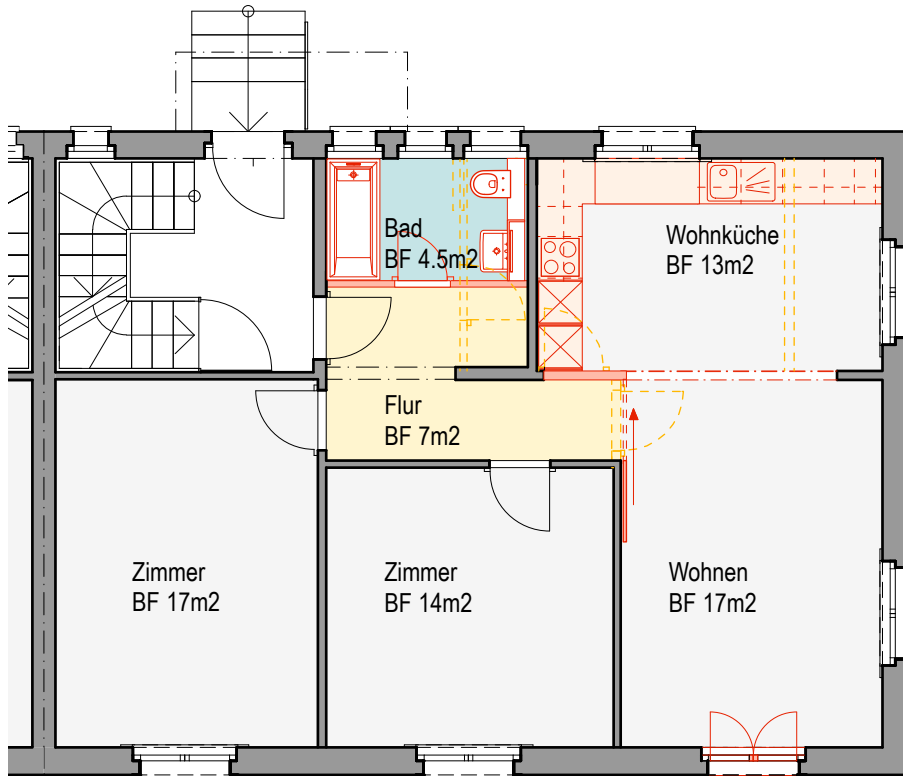


Obergeschoss | 3-Zi-Whg. 72.5m<sup>2</sup>  
Florastrasse 24

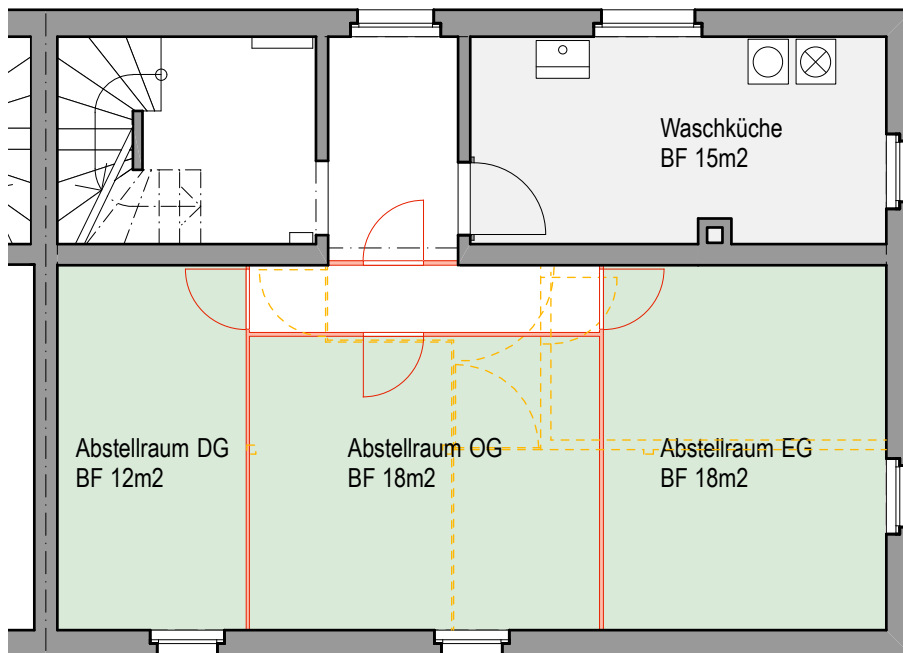


Ansicht Süd  
Florastrasse 24



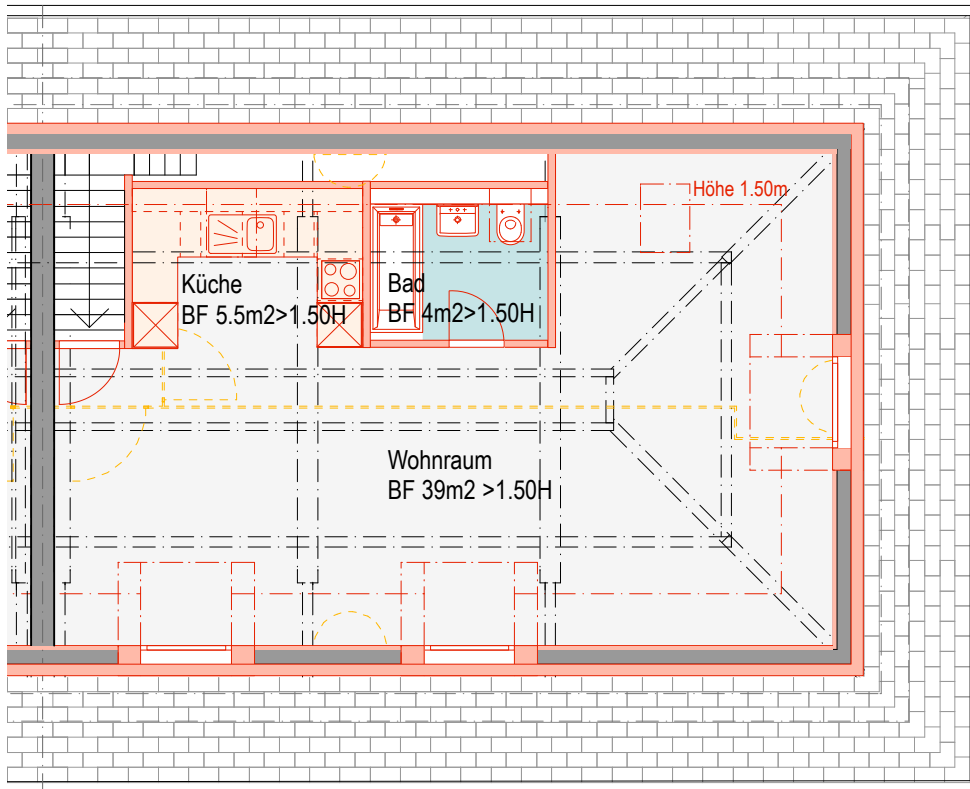


Erdgeschoss | 3-Zi-Whg. 72.5m<sup>2</sup>  
Florastrasse 26

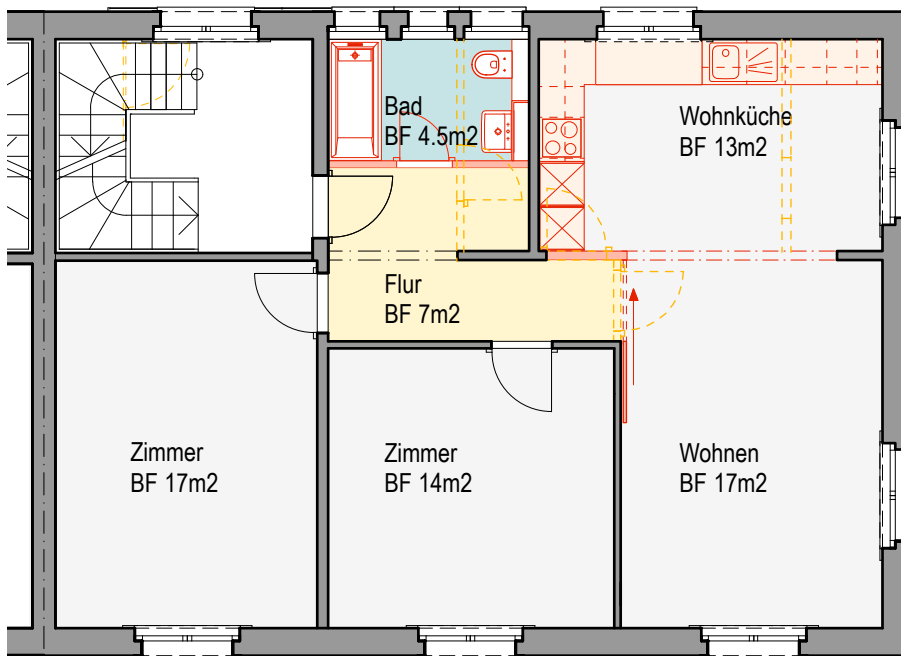


Untergeschoss  
Florastrasse 26





Dachgeschoss | Studio 48.5m<sup>2</sup>  
Florastrasse 26



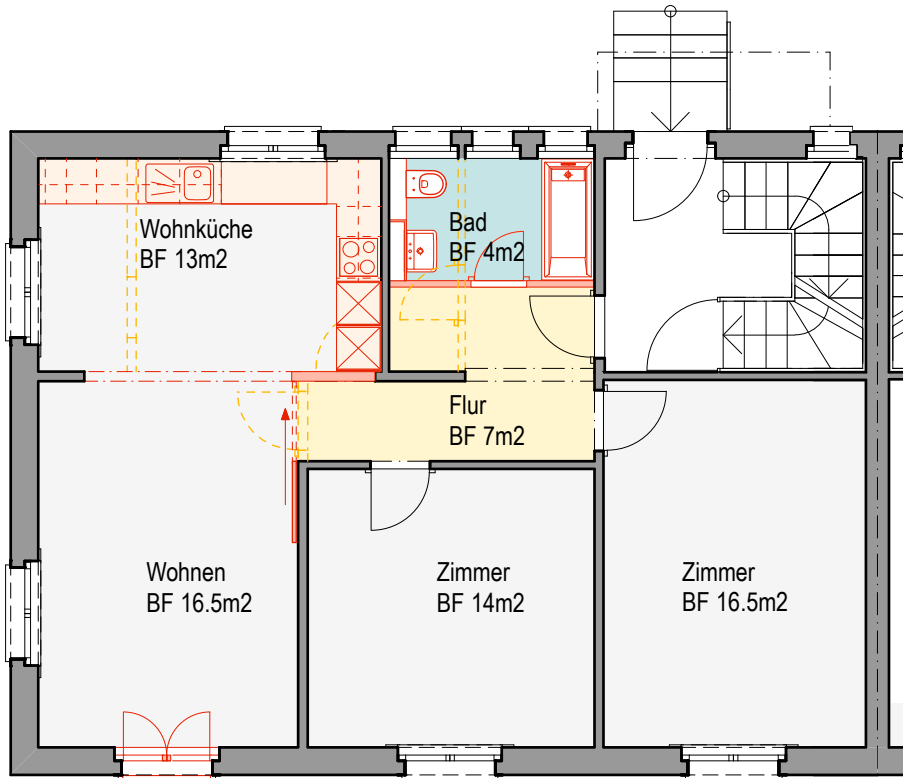
Obergeschoss | 3-Zi-Whg. 72.5m<sup>2</sup>  
Florastrasse 26



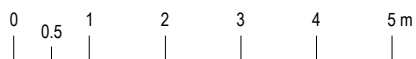
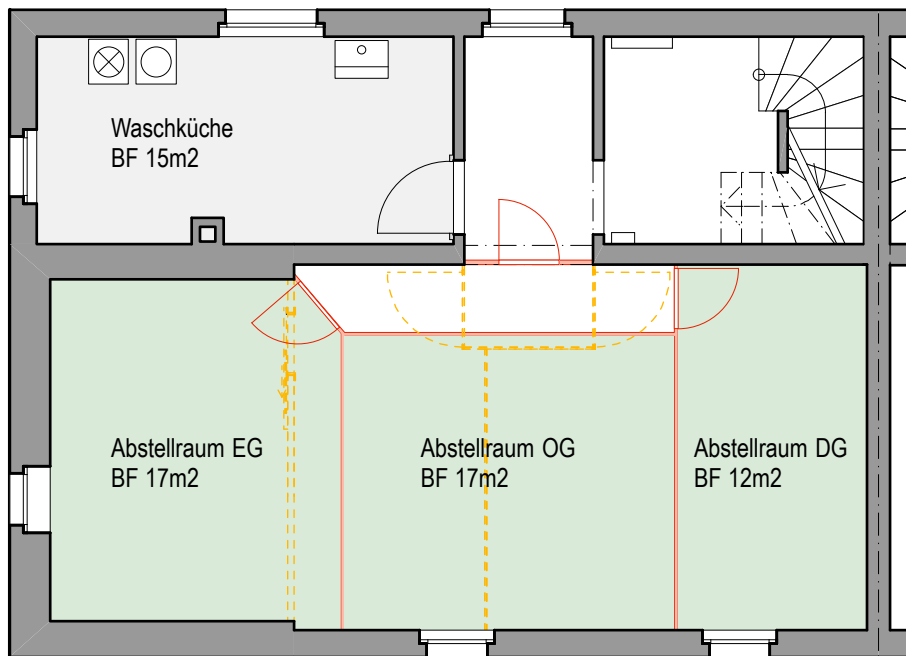


Ansicht Süd  
Florastrasse 26

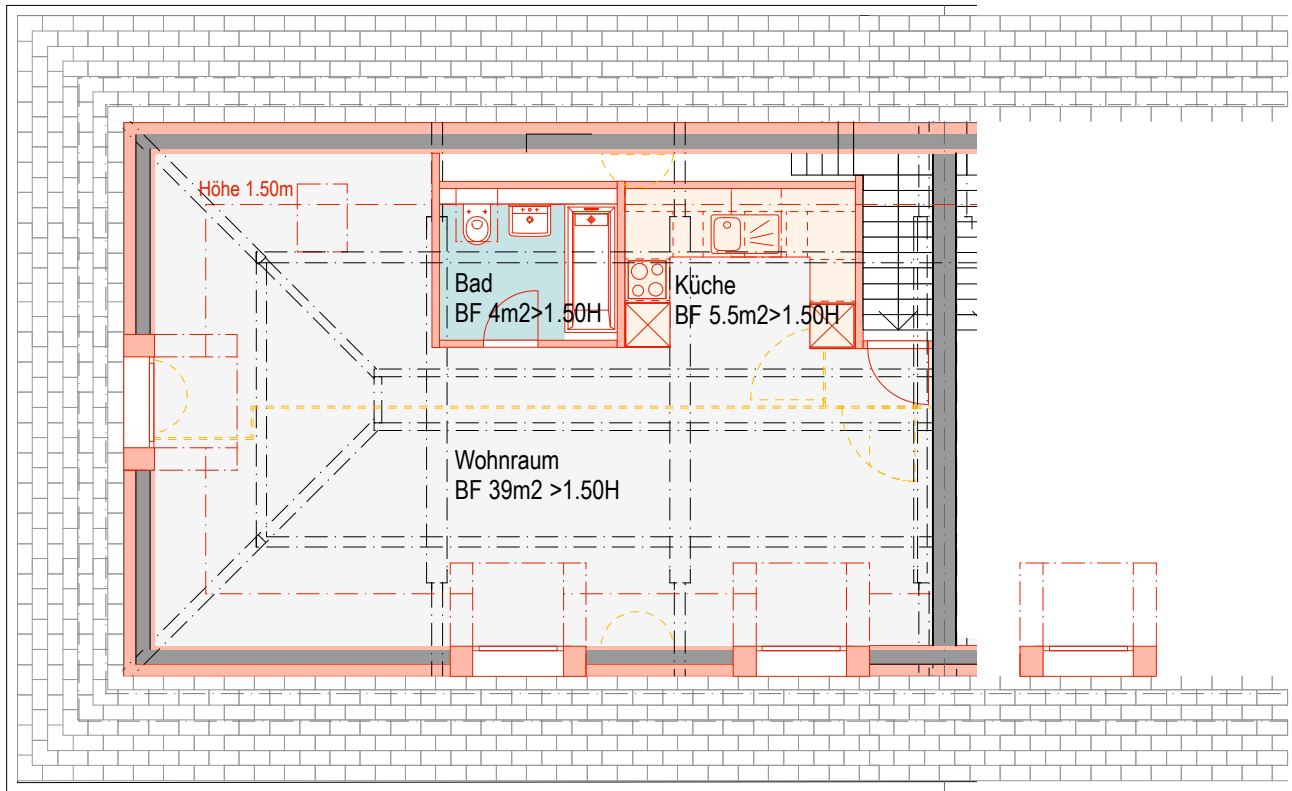




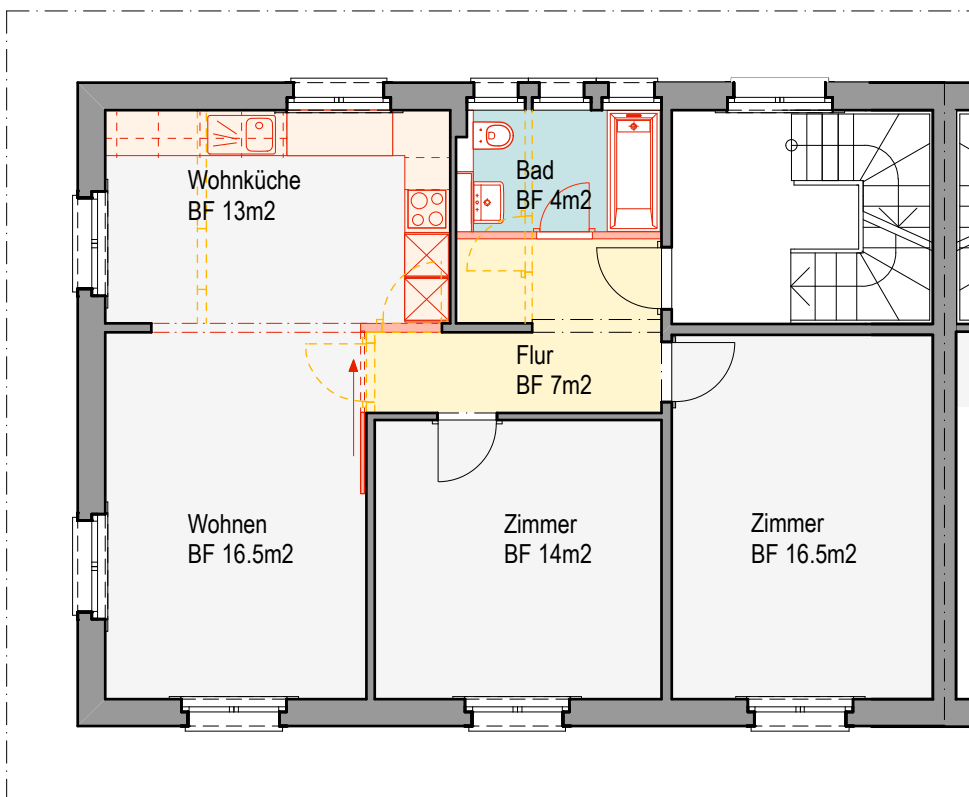
Erdgeschoss | 3-Zi-Whg. 72.5m<sup>2</sup>  
Florastrasse 28



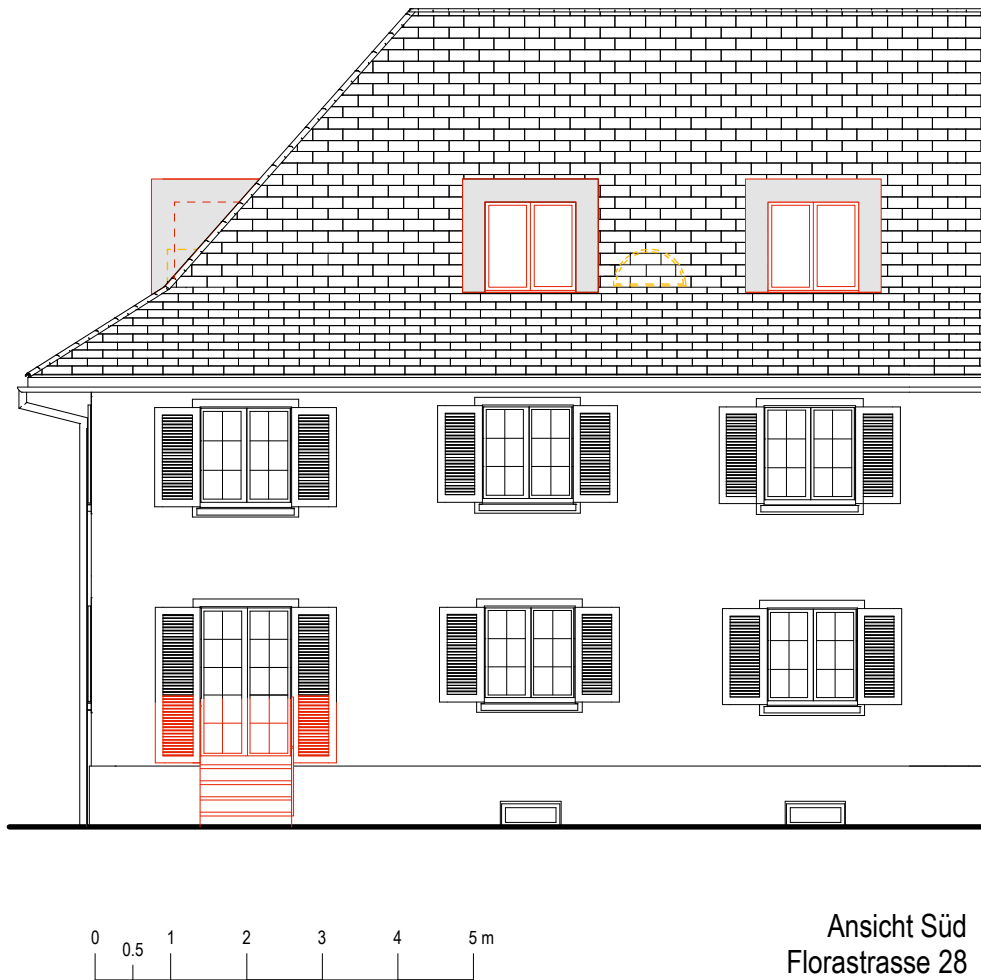
Untergeschoss  
Florastrasse 28

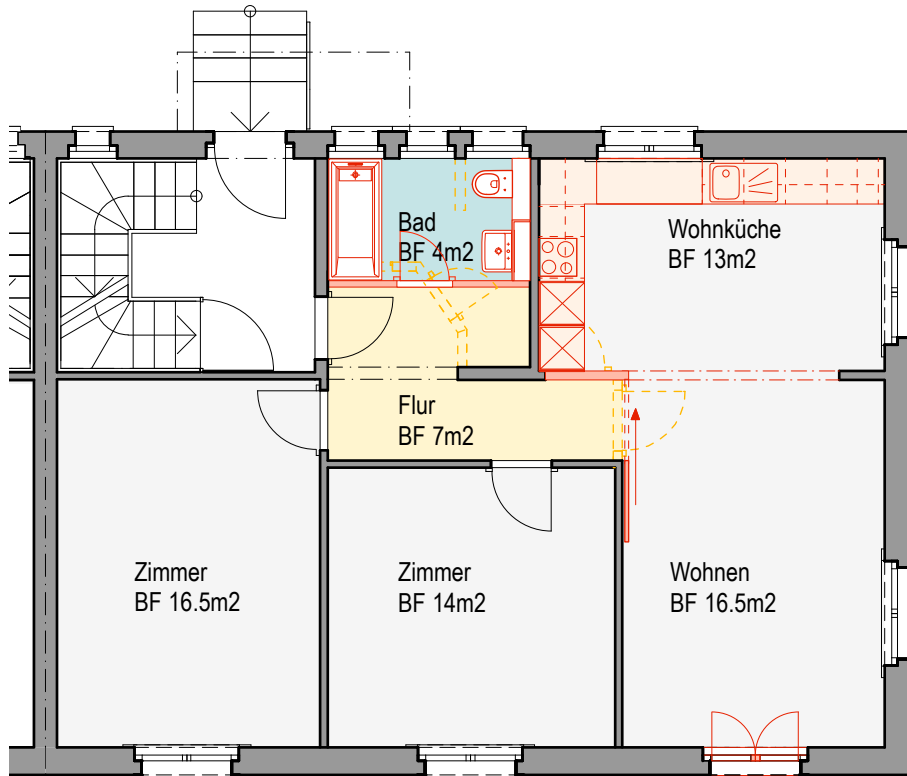


Dachgeschoss | Studio 48.5m<sup>2</sup>  
Florastrasse 28

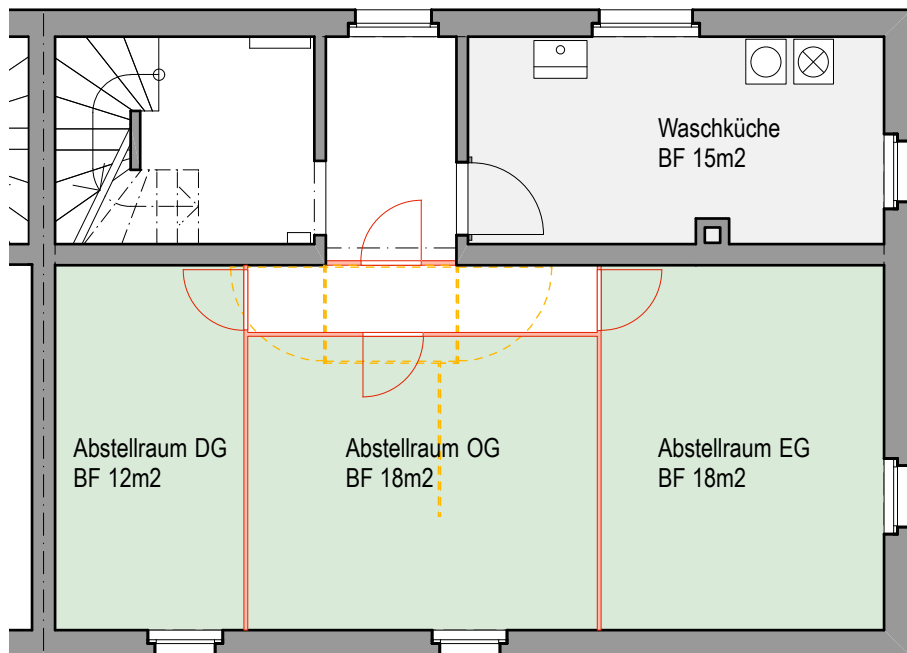
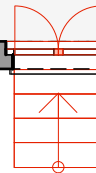


Obergeschoss | 3-Zi-Whg. 72.5m<sup>2</sup>  
Florastrasse 28



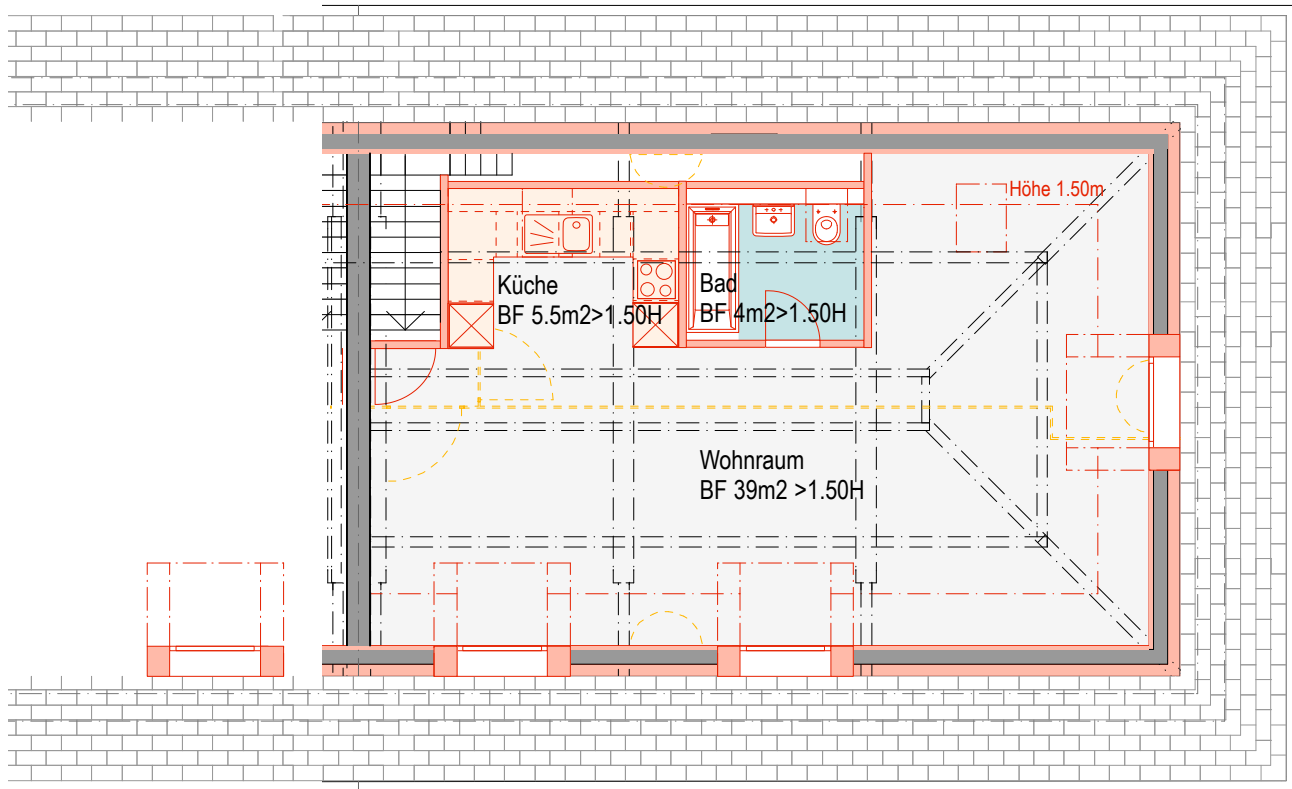


Erdgeschoss | 3-Zi-Whg. 72.5m<sup>2</sup>  
Florastrasse 30

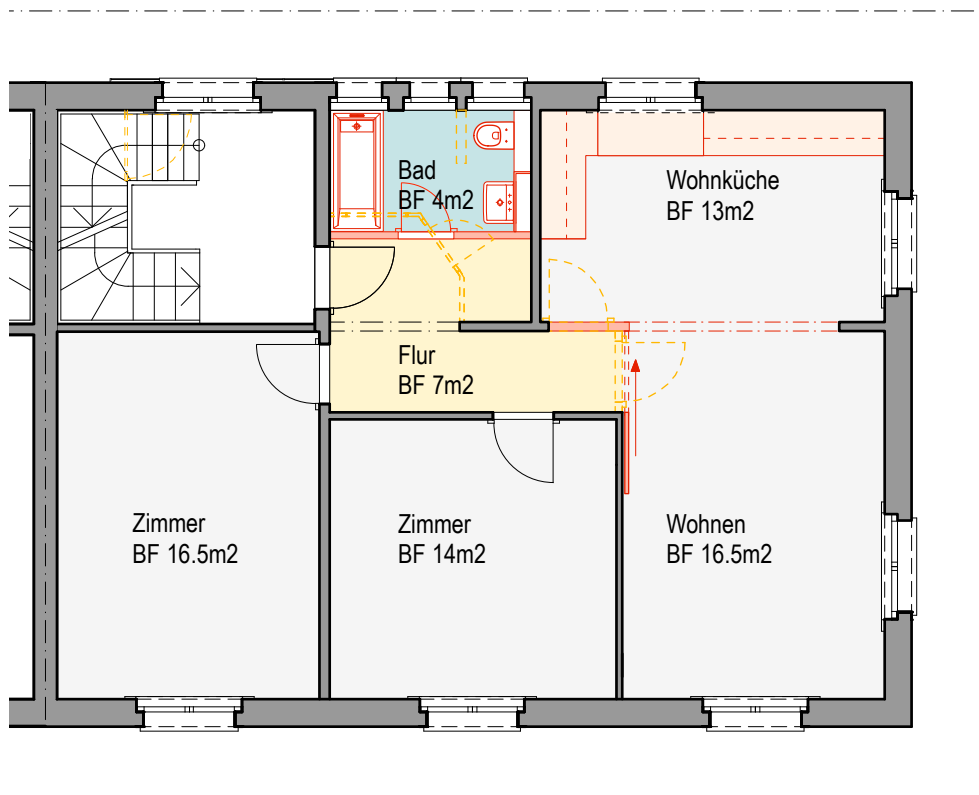


Untergeschoss  
Florastrasse 30





Dachgeschoss | Studio 48.5m²  
Florastrasse 30



Obergeschoss | 3-Zi-Whg. 72.5m²  
Florastrasse 30

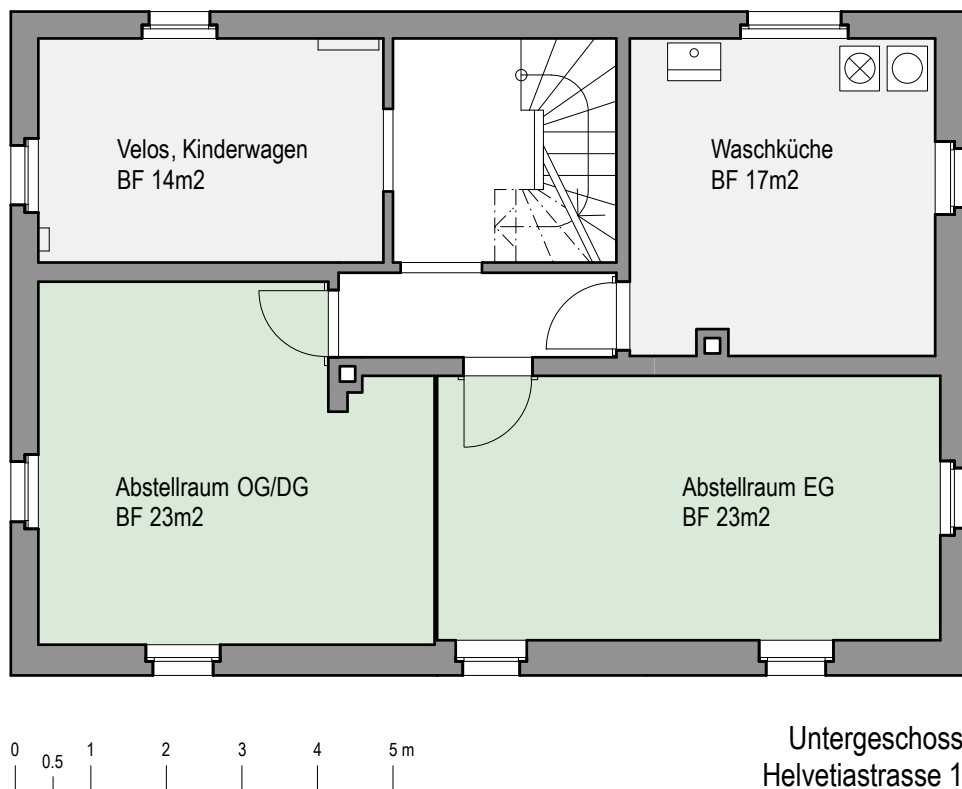
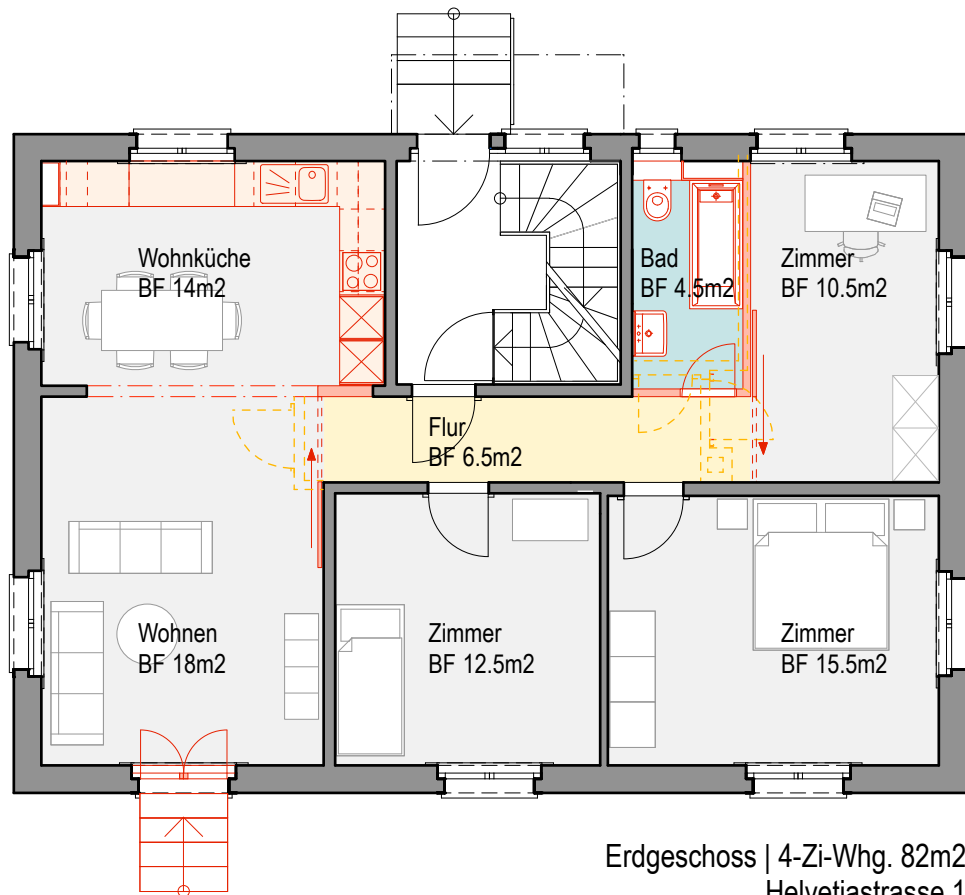


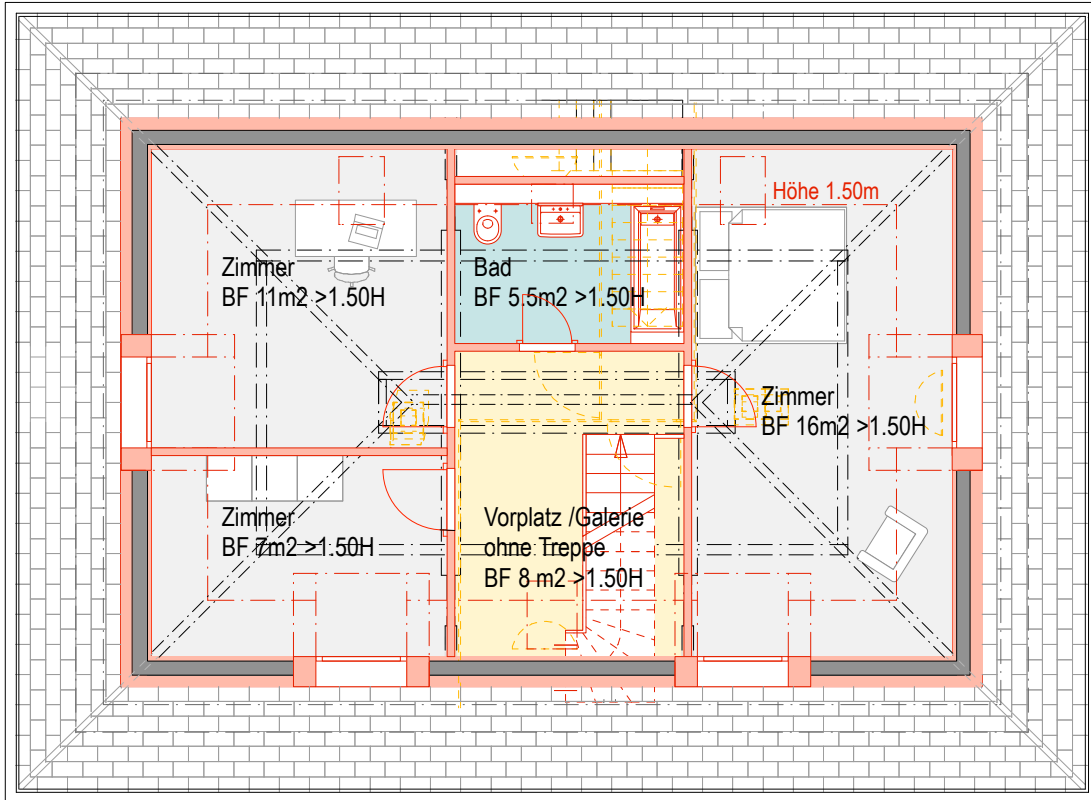




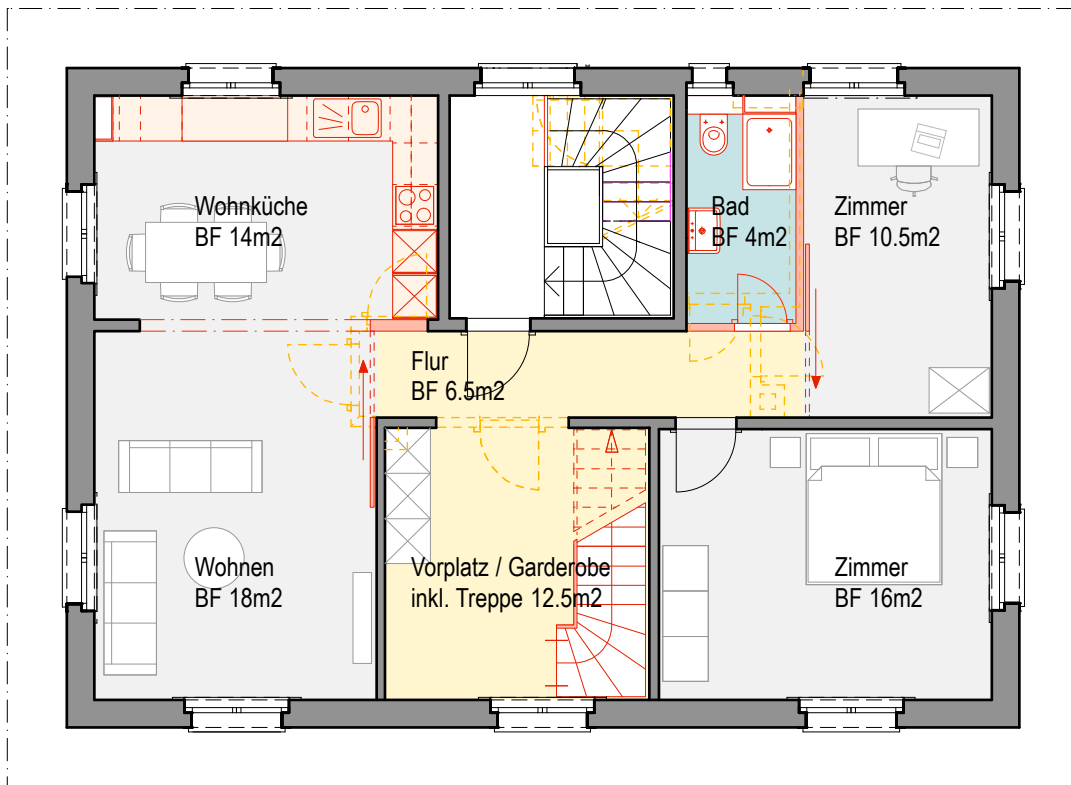
Ansicht Süd  
Florastrasse 30





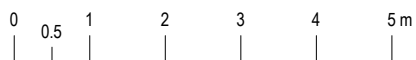
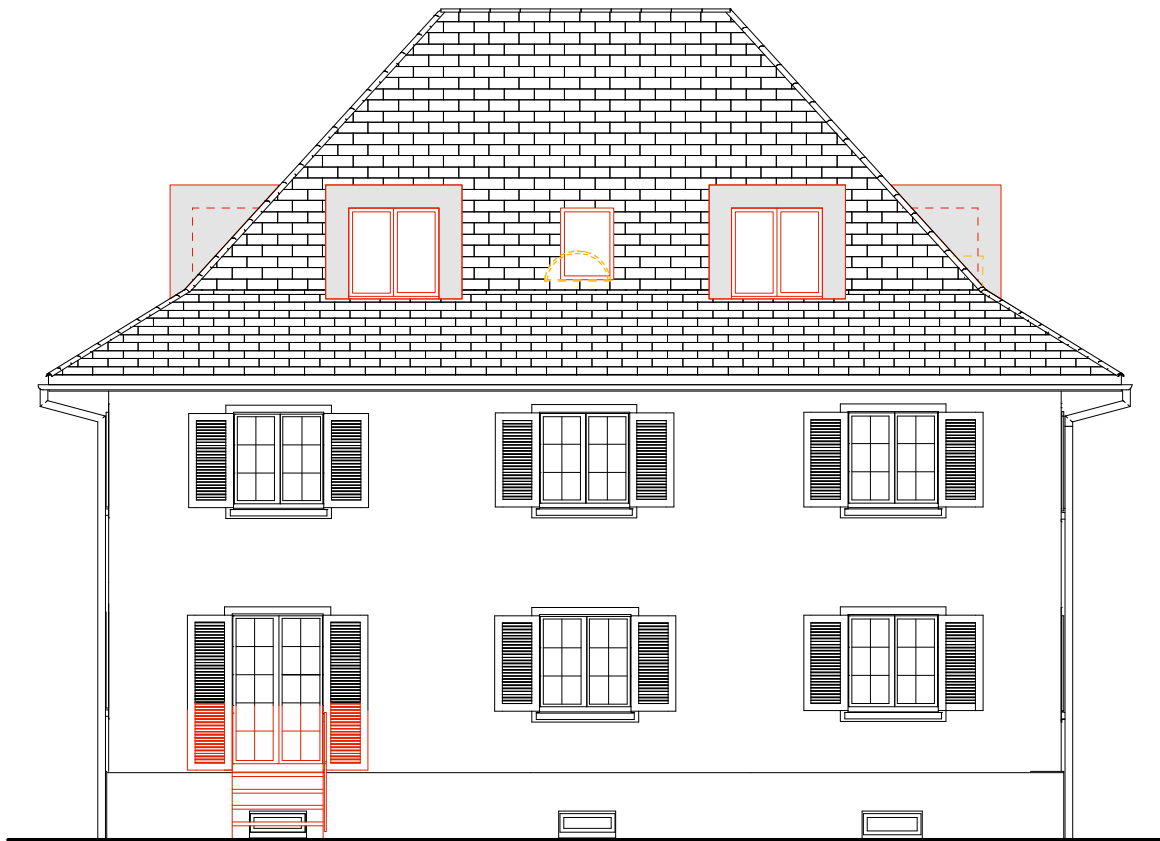


Dachgeschoss | 6-Zi-Maisonette 129m<sup>2</sup>  
Helvetiastrasse 1

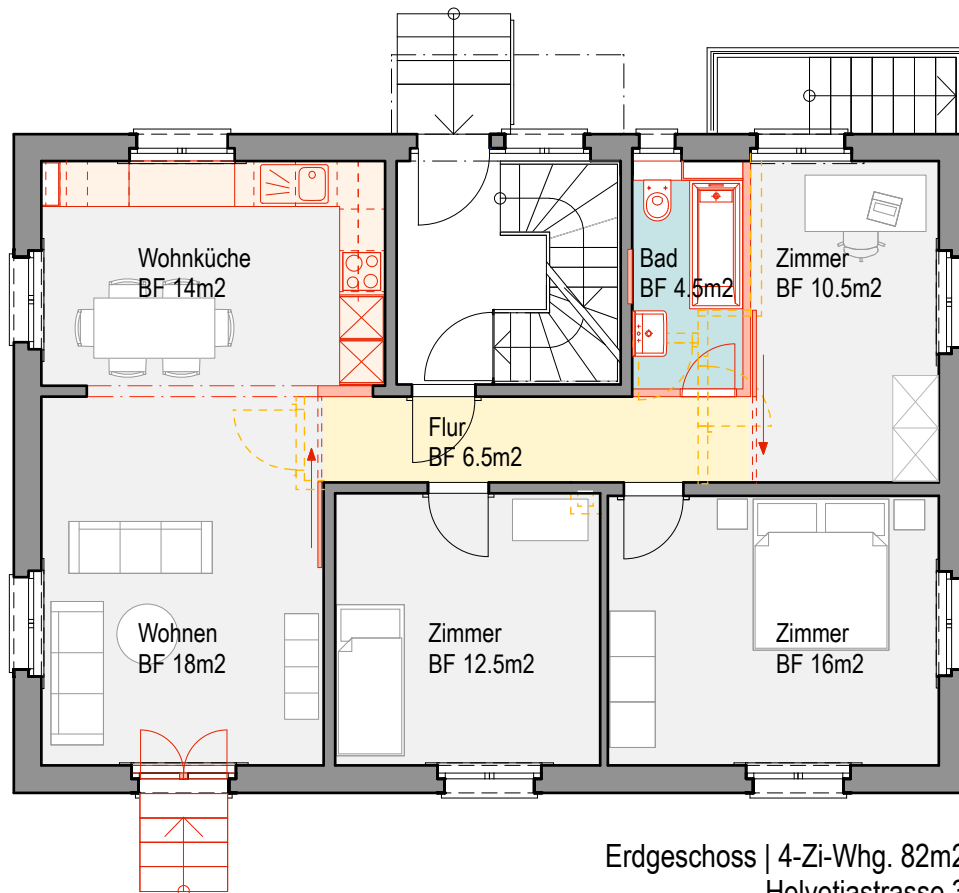


Obergeschoss | 6-Zi-Maisonette 129m<sup>2</sup>  
Helvetiastrasse 1

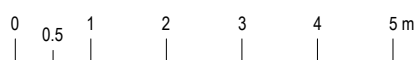
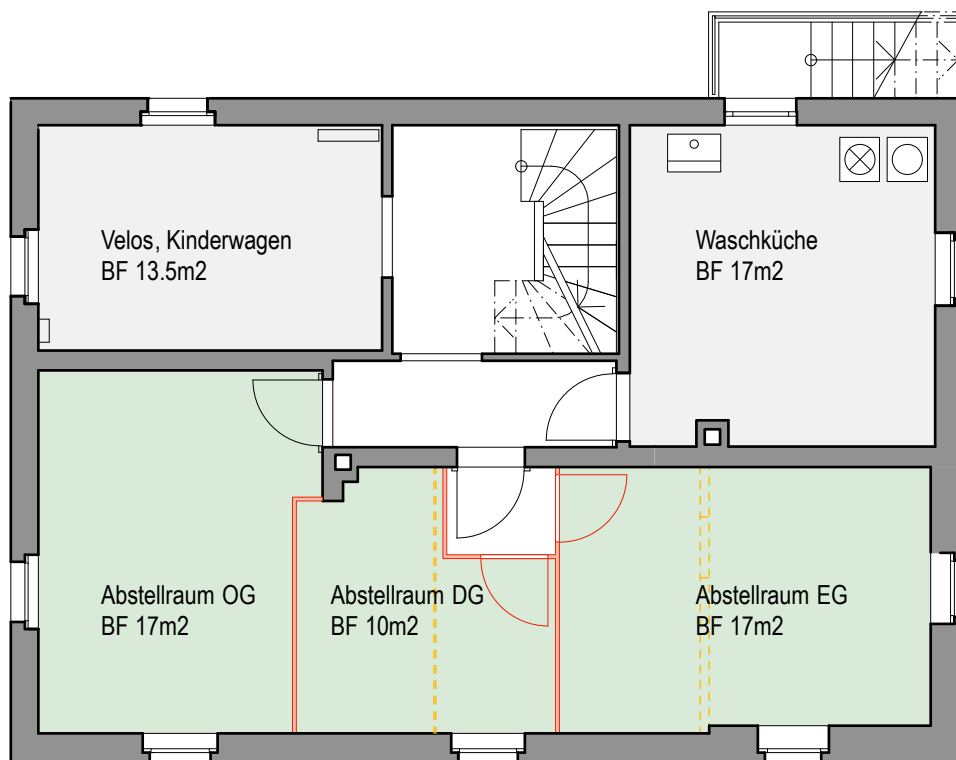




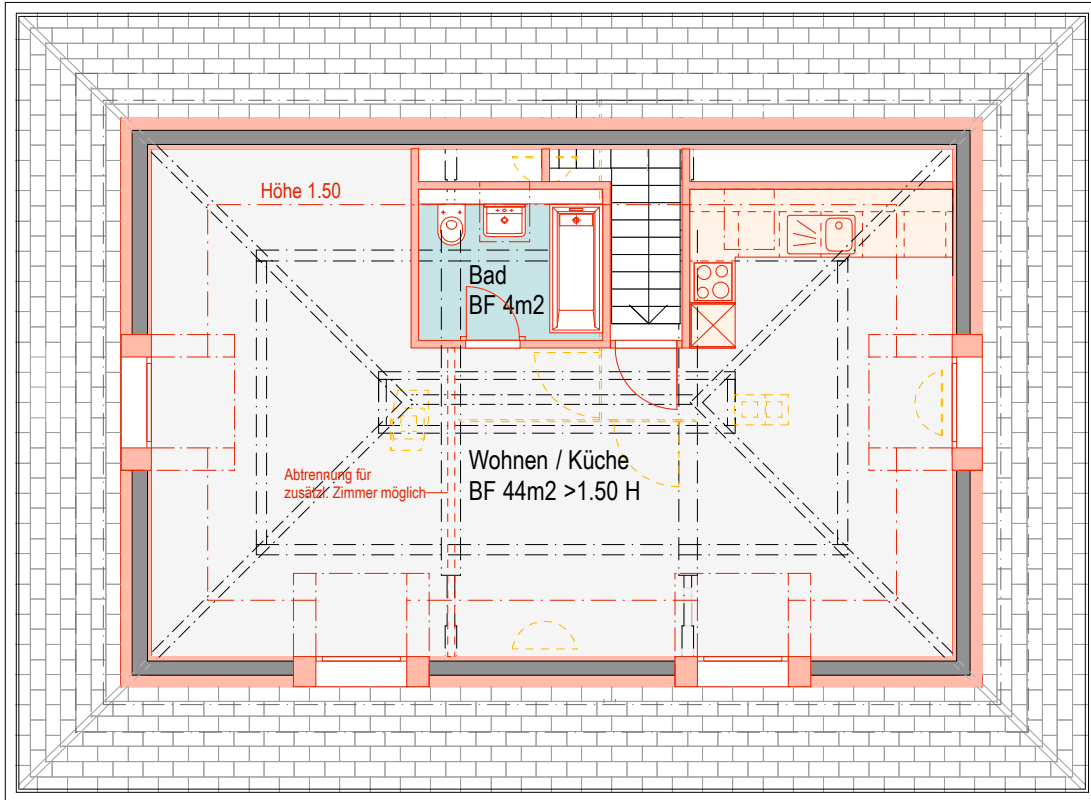
Ansicht Süd  
Helvetiastrasse 1



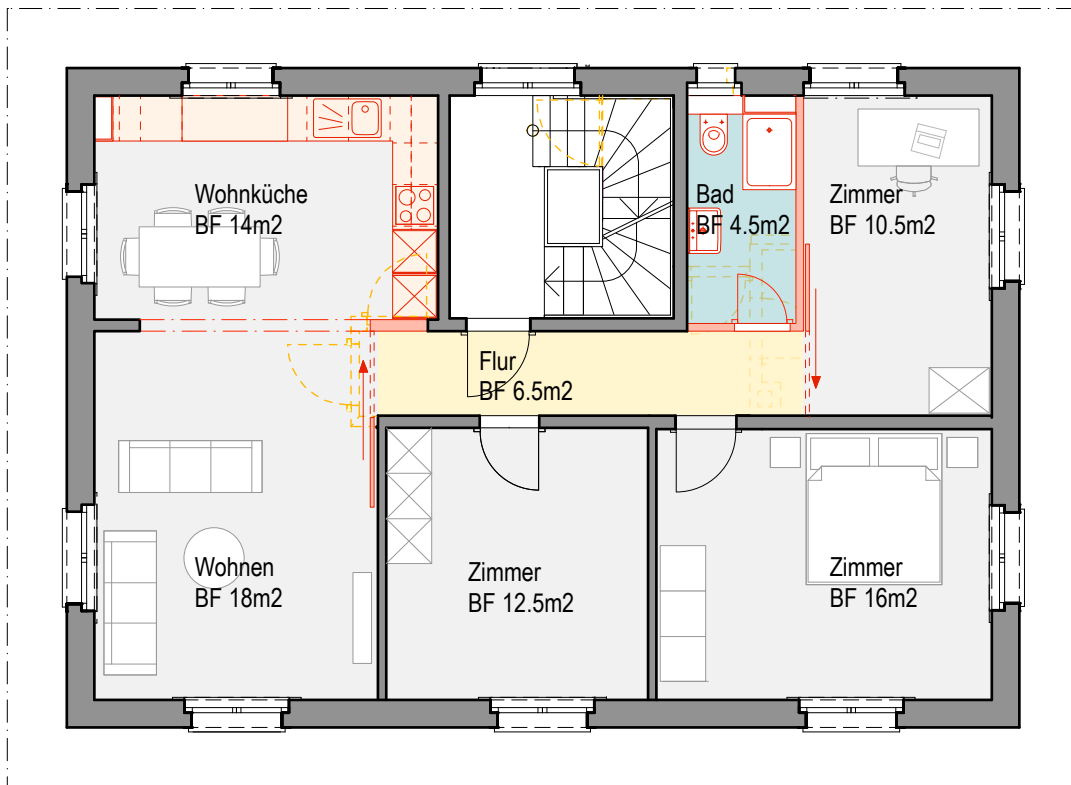
Erdgeschoss | 4-Zi-Whg. 82m<sup>2</sup>  
Helvetiastrasse 3



Untergeschoss  
Helvetiastrasse 3

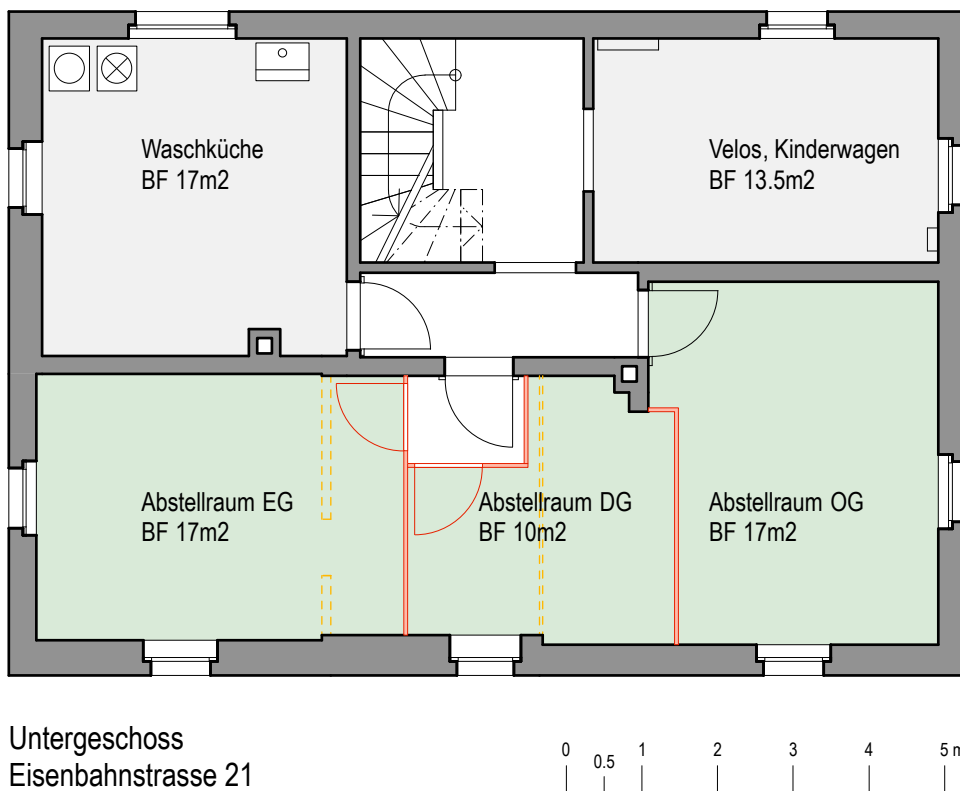
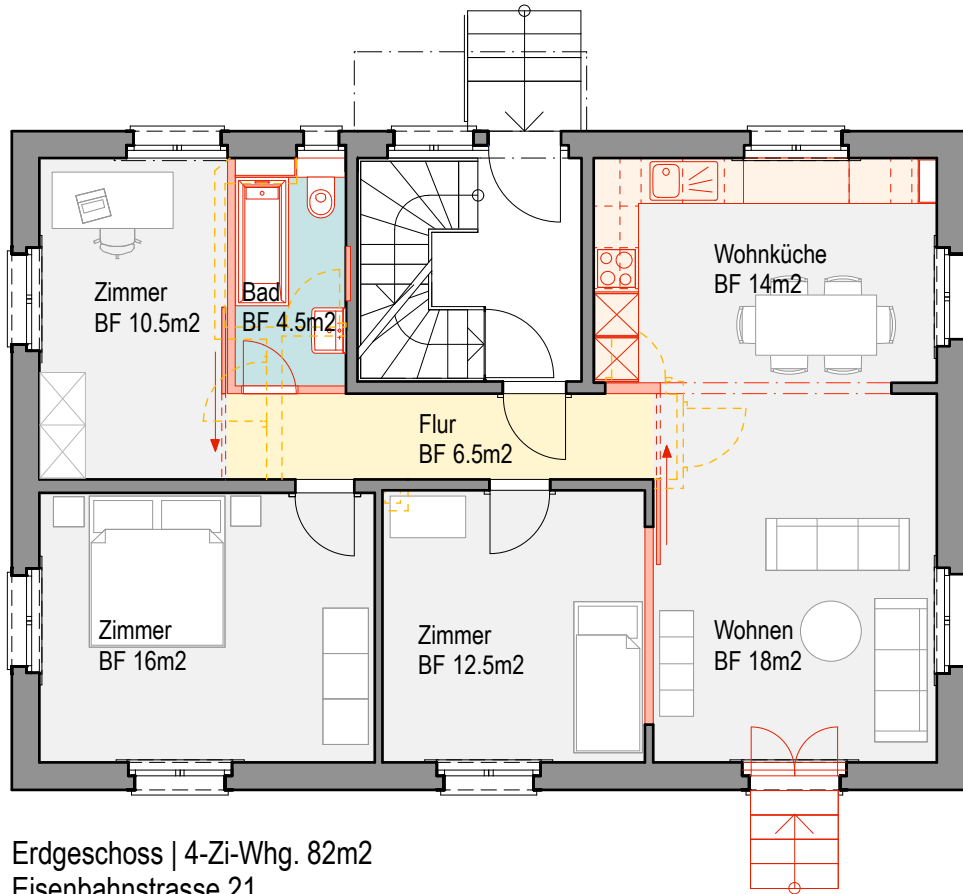


Dachgeschoss | Studio 48.5m<sup>2</sup>  
Helvetiastrasse 3

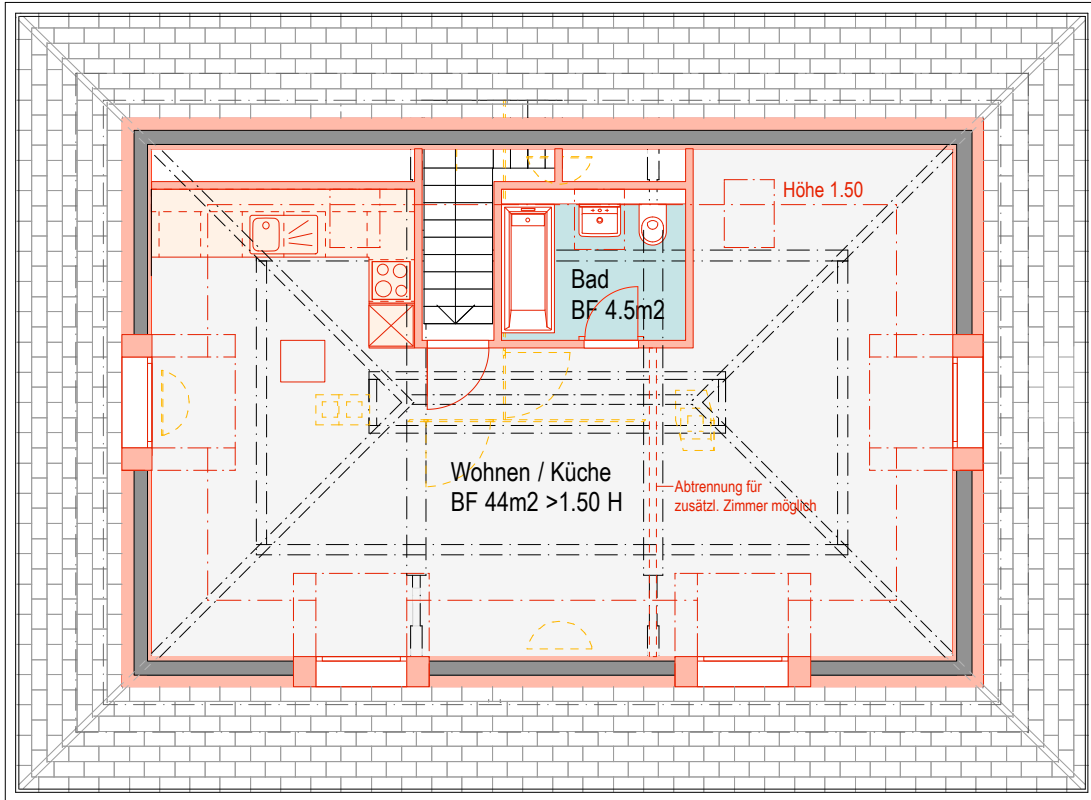


Obergeschoss | 4-Zi-Whg. 82m<sup>2</sup>  
Helvetiastrasse 3

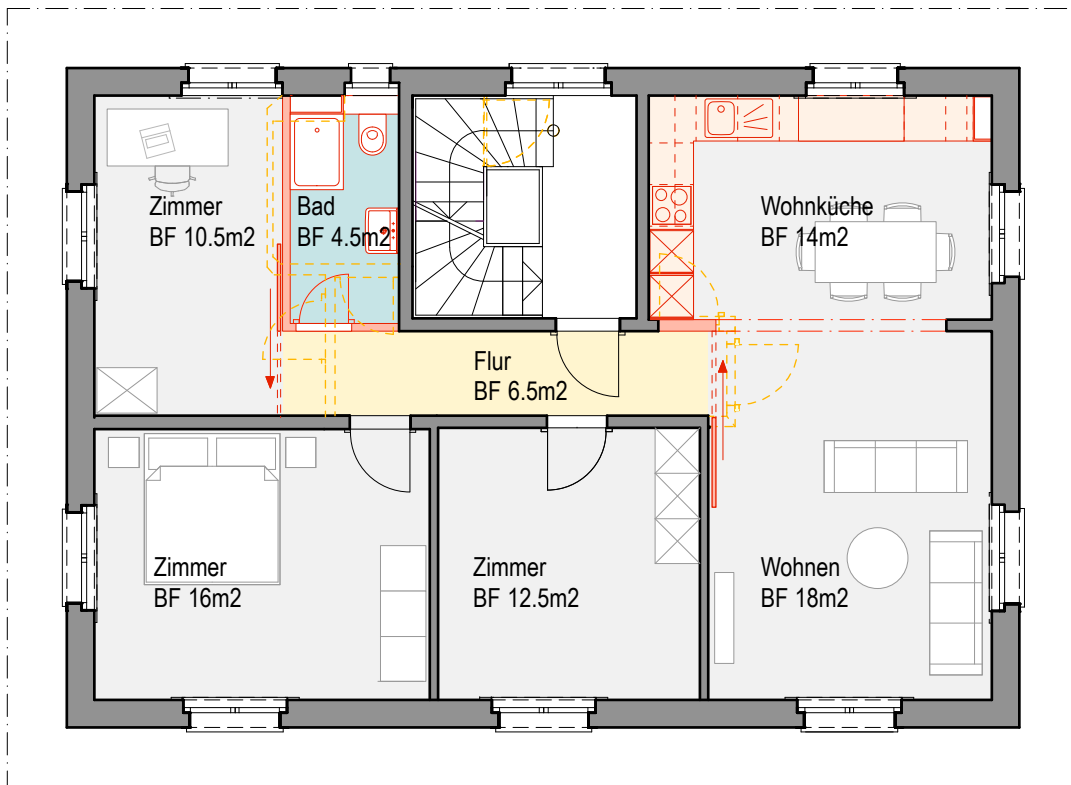








Dachgeschoss | Studio 48.5m<sup>2</sup>  
Eisenbahnstrasse 21

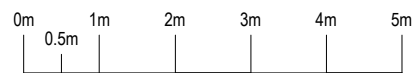


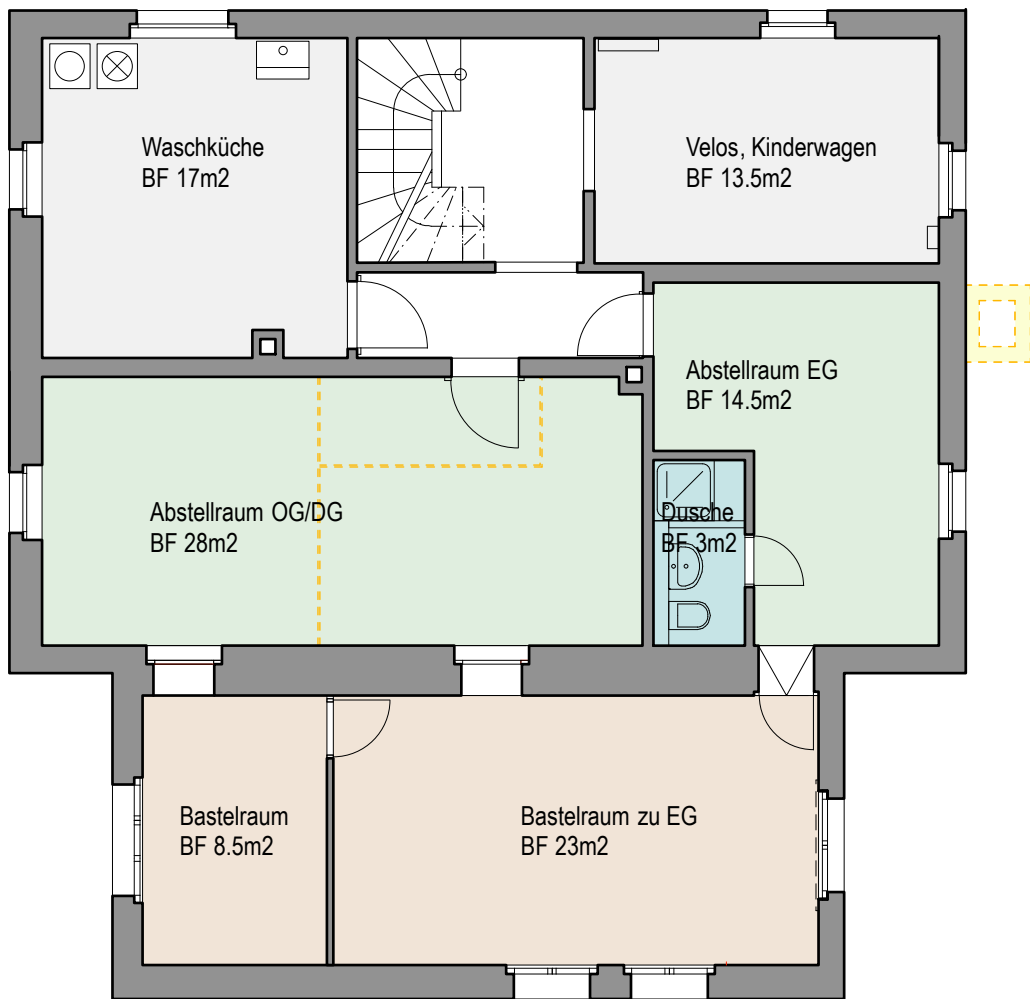
Obergeschoss | 4-Zi-Whg. 82m<sup>2</sup>  
Eisenbahnstrasse 21



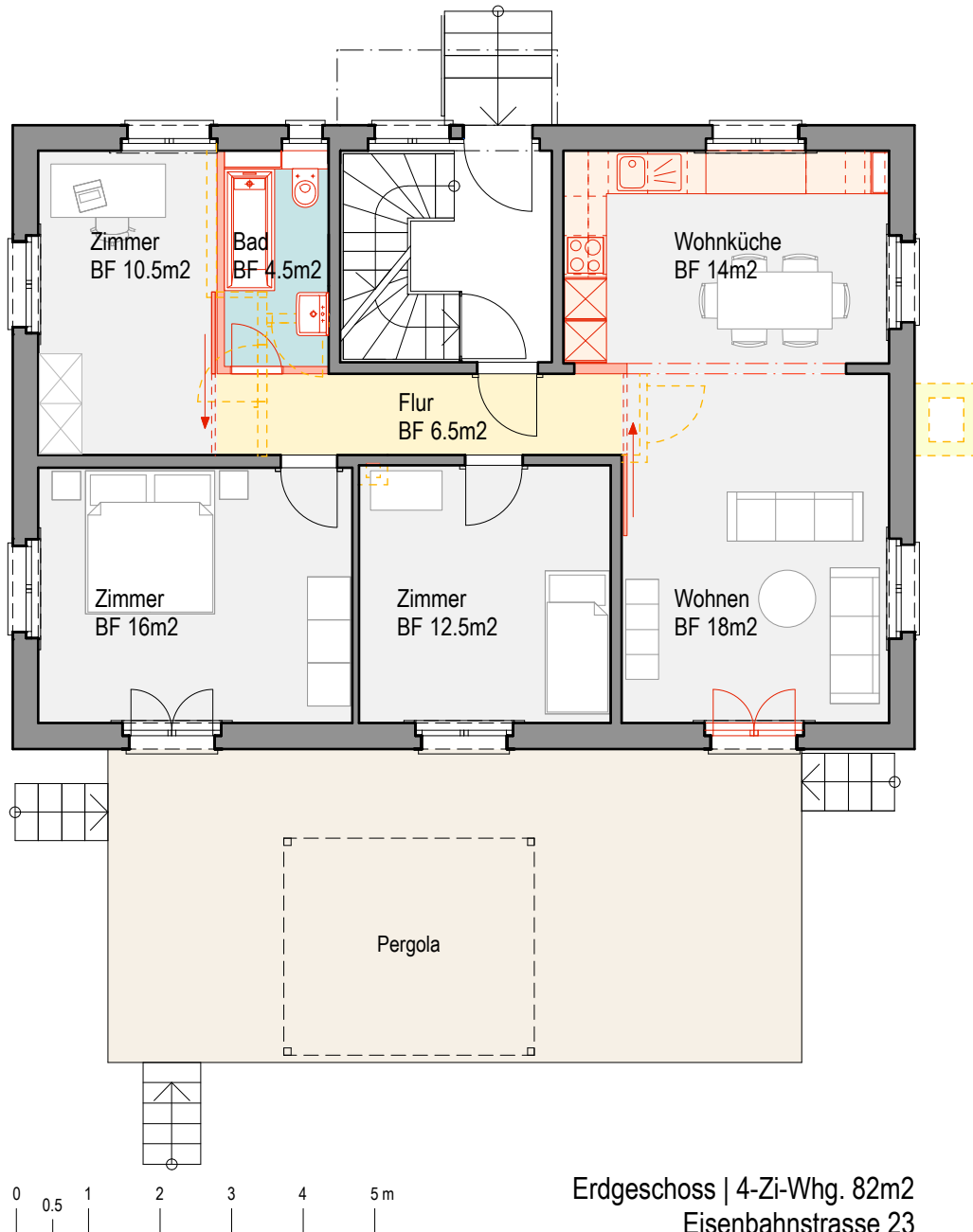


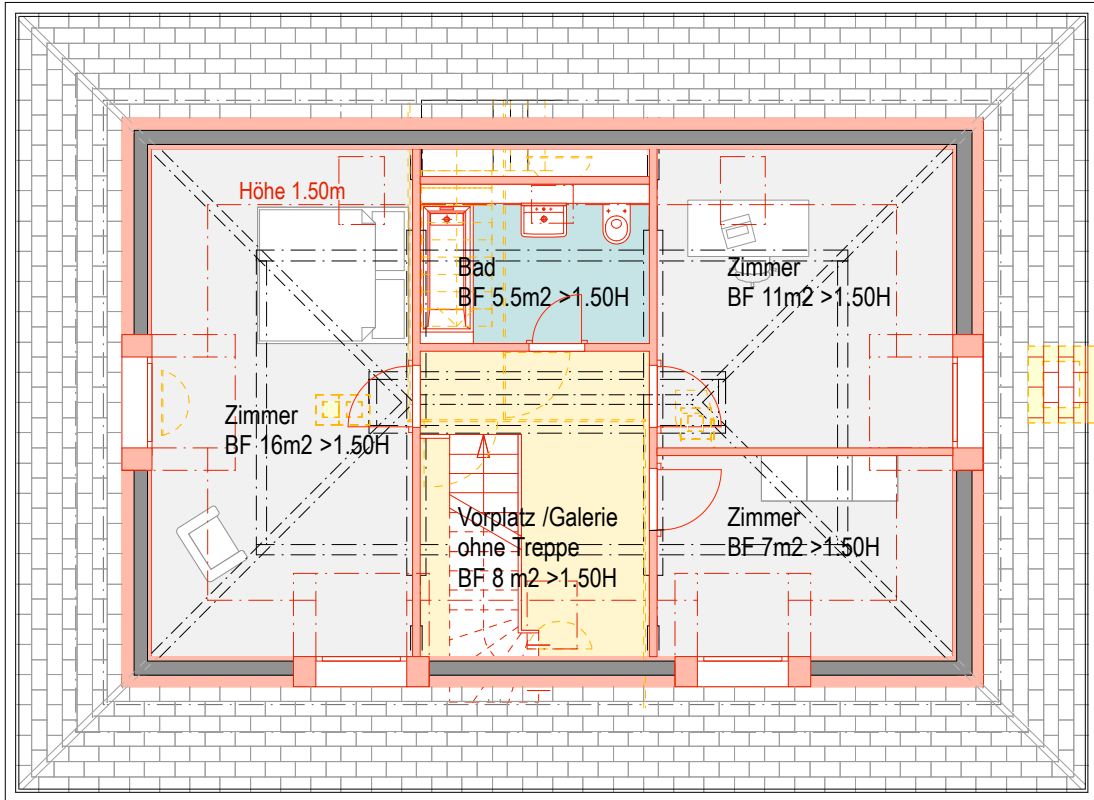
Ansicht Süd  
Eisenbahnstrasse 21



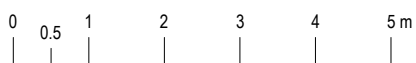
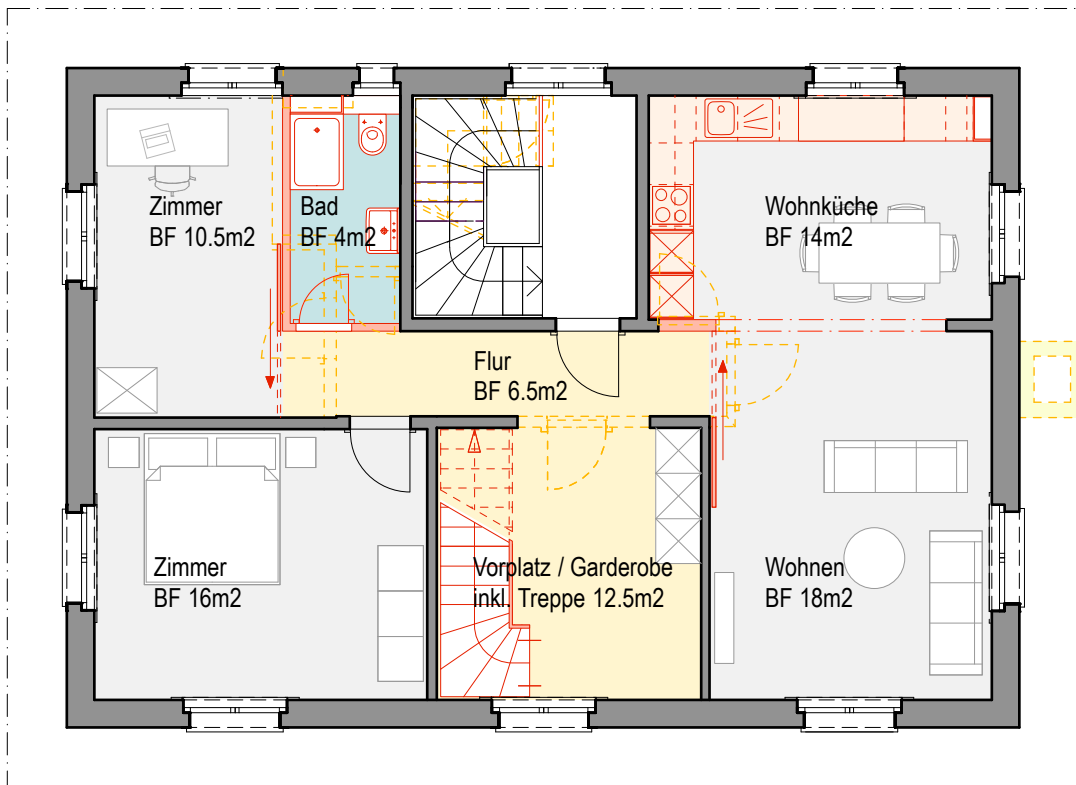


Untergeschoss  
Eisenbahnstrasse 23





Dachgeschoss | 6-Zi-Maisonette 129m<sup>2</sup>  
Eisenbahnstrasse 23

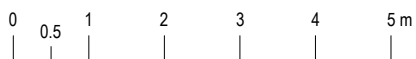
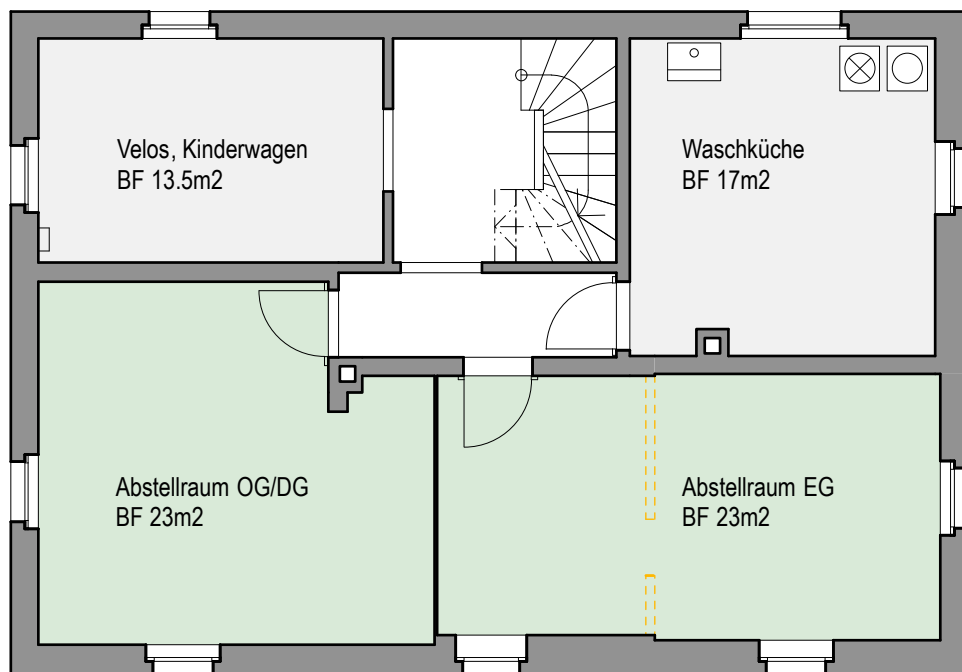
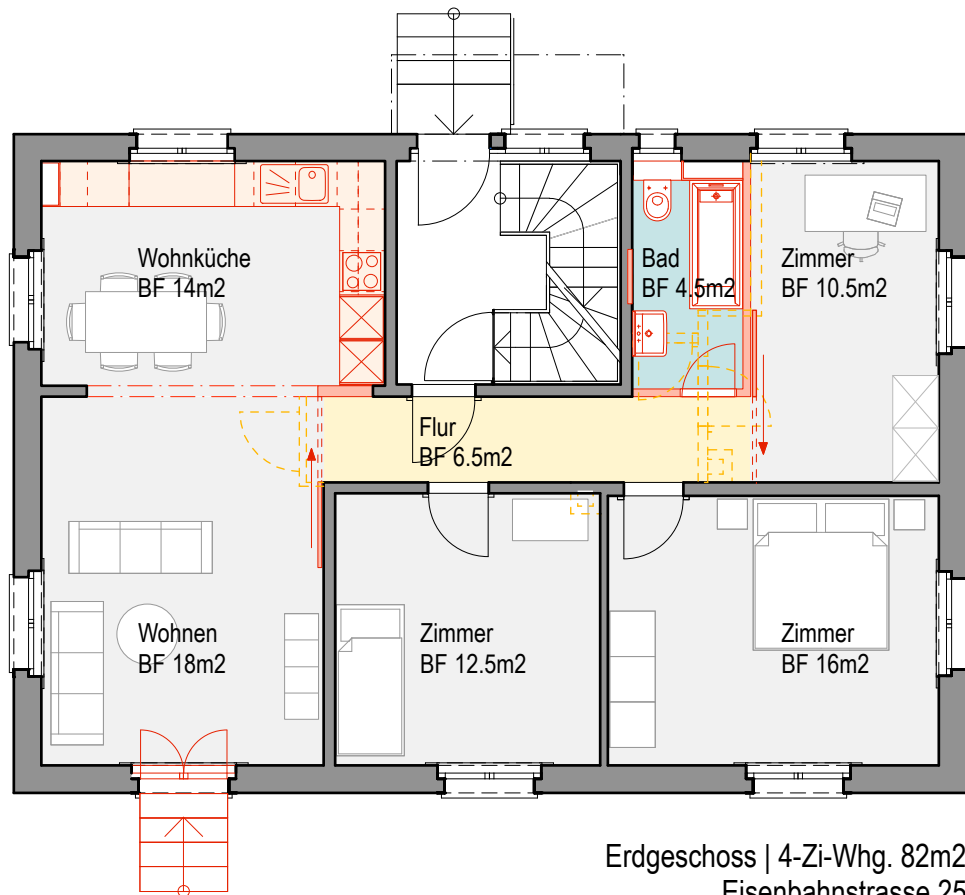


Obergeschoss | 6-Zi-Maisonette 129m<sup>2</sup>  
Eisenbahnstrasse 23

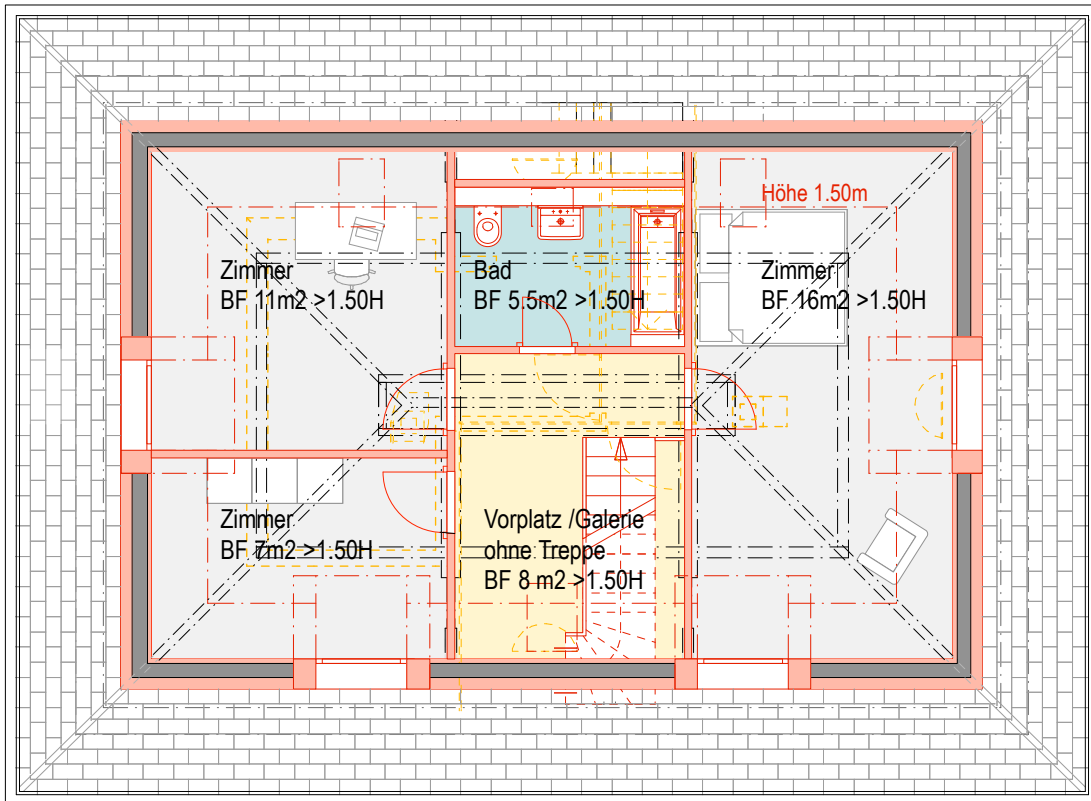


0 0.5 1 2 3 4 5 m

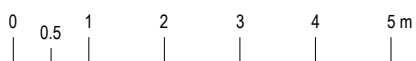
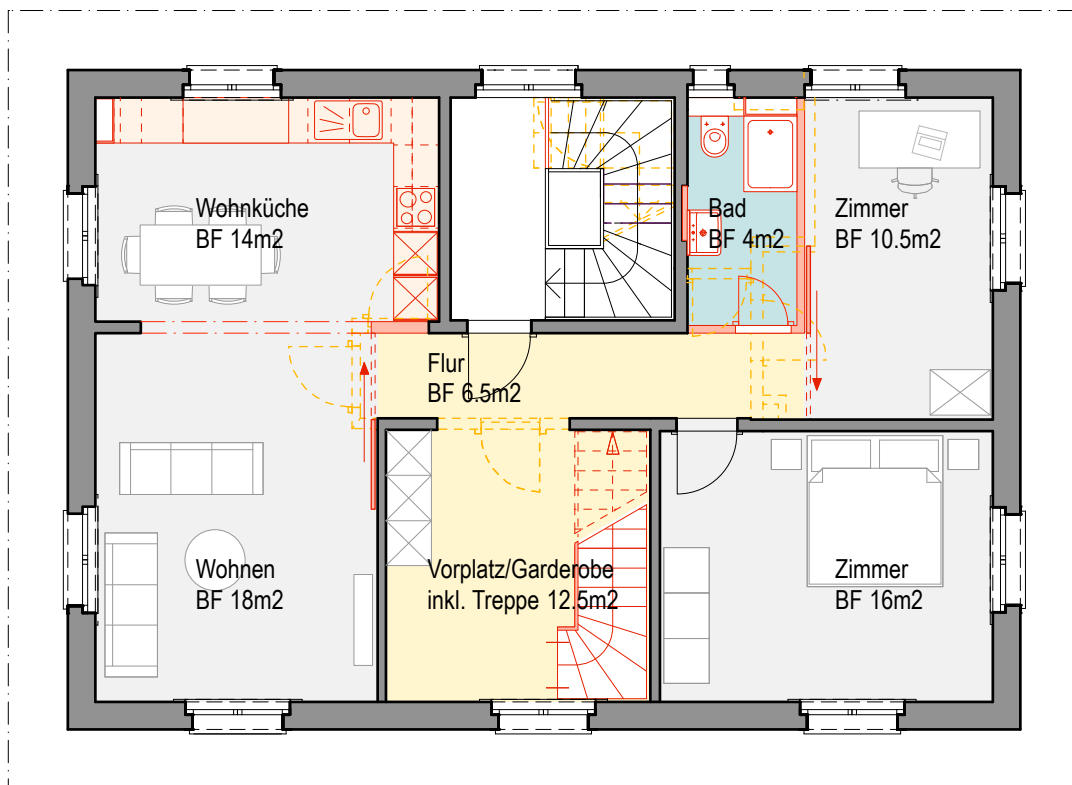
Ansicht Süd  
Eisenbahnstrasse 23



Untergeschoss  
Eisenbahnstrasse 25

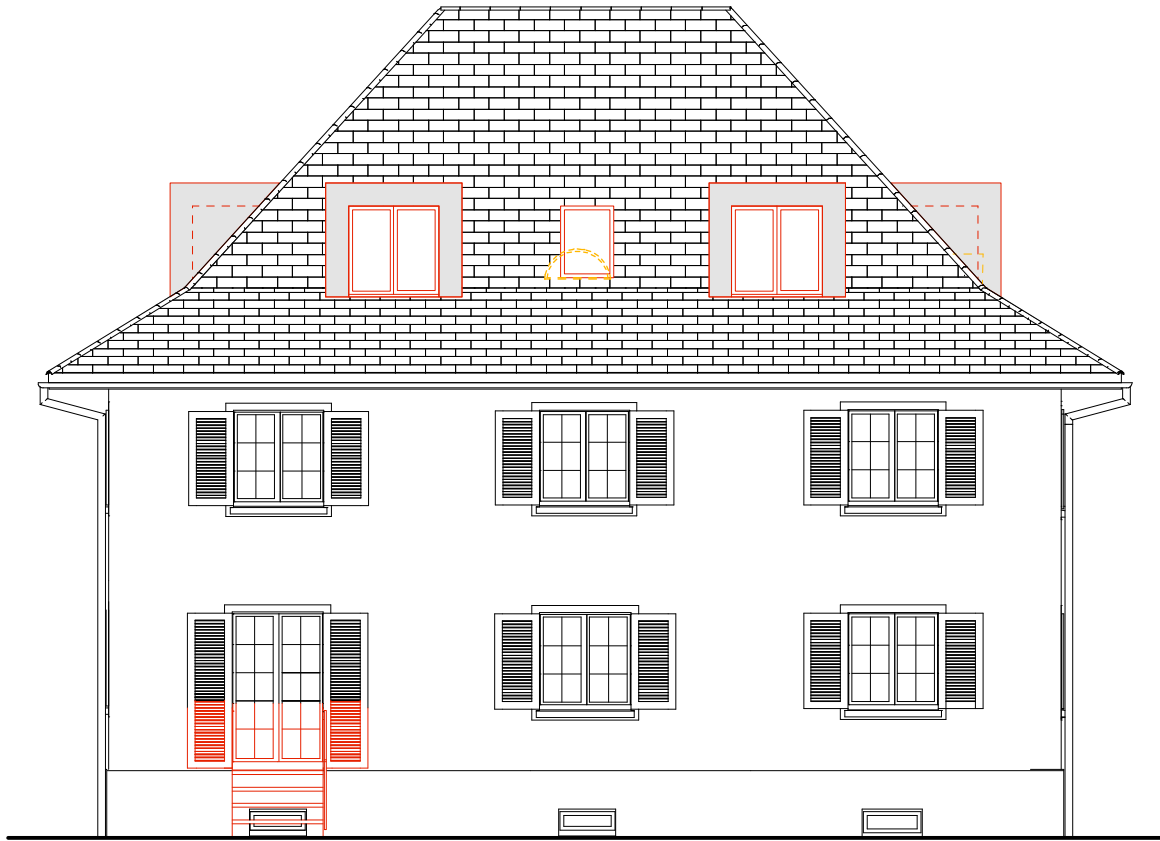


Dachgeschoss | 6-Zi-Maisonette 129m<sup>2</sup>  
Eisenbahnstrasse 25

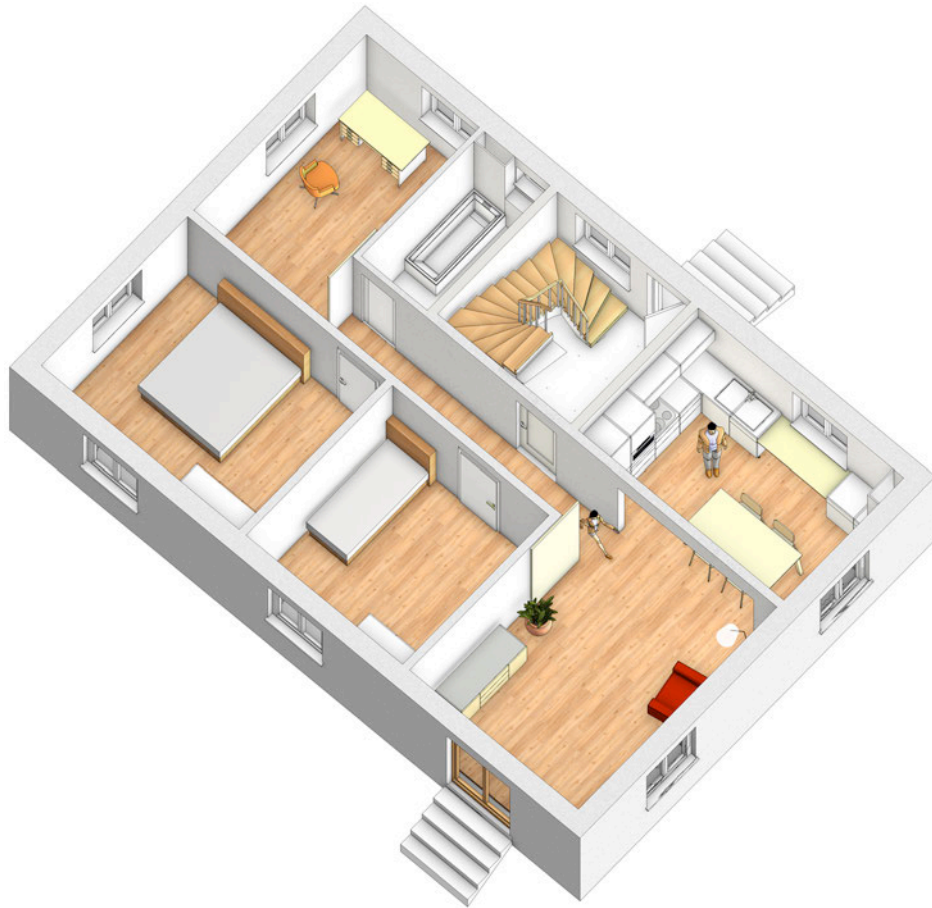


Obergeschoss | 6-Zi-Maisonette 129m<sup>2</sup>  
Eisenbahnstrasse 25

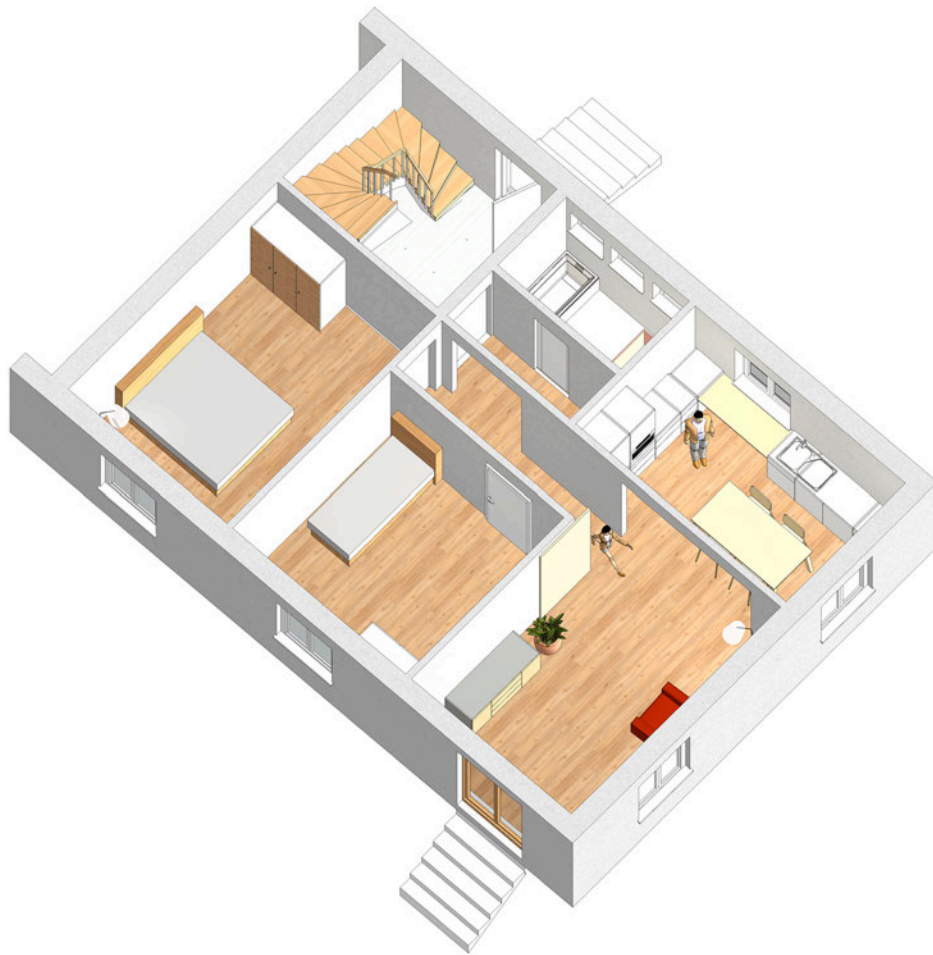




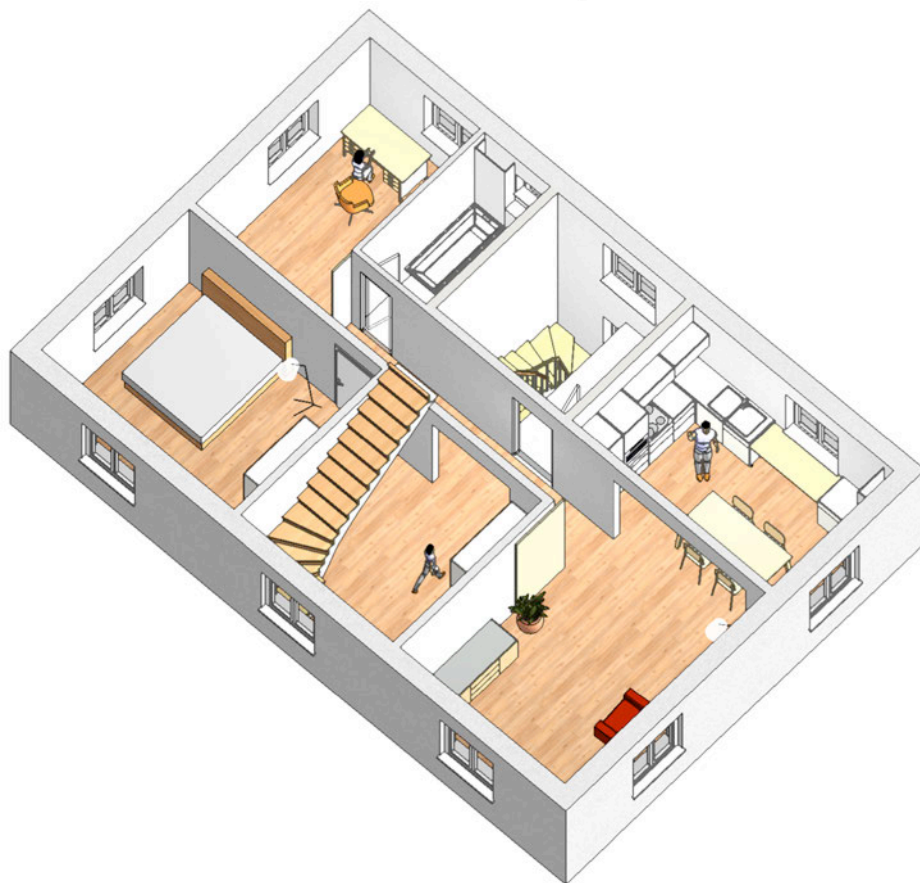
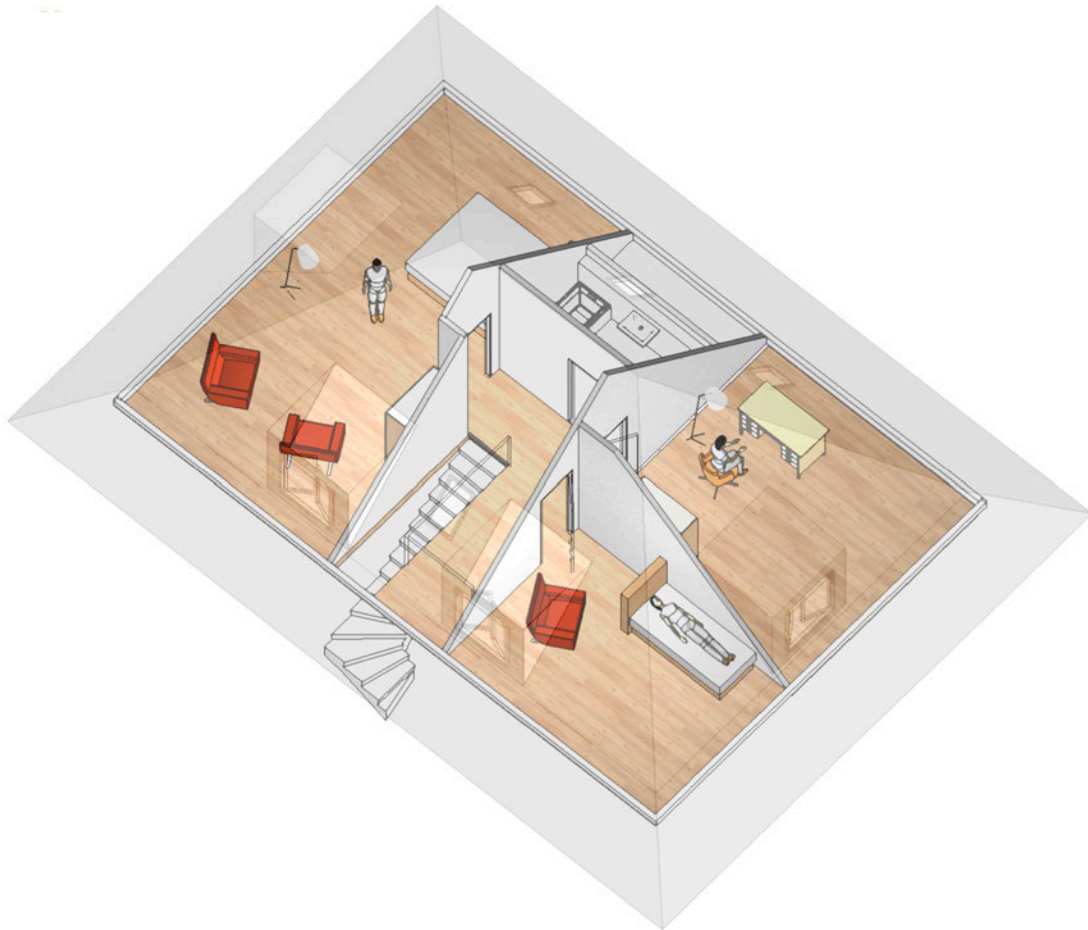
Ansicht Süd  
Eisenbahnstrasse 25



Haustyp 1, Wohnung EG | Axonometrie und Perspektive



Haustyp 2, Wohnung EG | Axonometrie und Perspektive



Haustyp 1, Maisonettewohnung | Axonometrien OG und DG



Haustyp 1, Studio DG | Axonometrie und Perspektive